

# Publication Summary



## Dental Statistics – NHS General Dental Service Registrations

Updates of existing pages to / as at 30<sup>th</sup> June 2011

Publication date – 30<sup>th</sup> August 2011



### About this Release

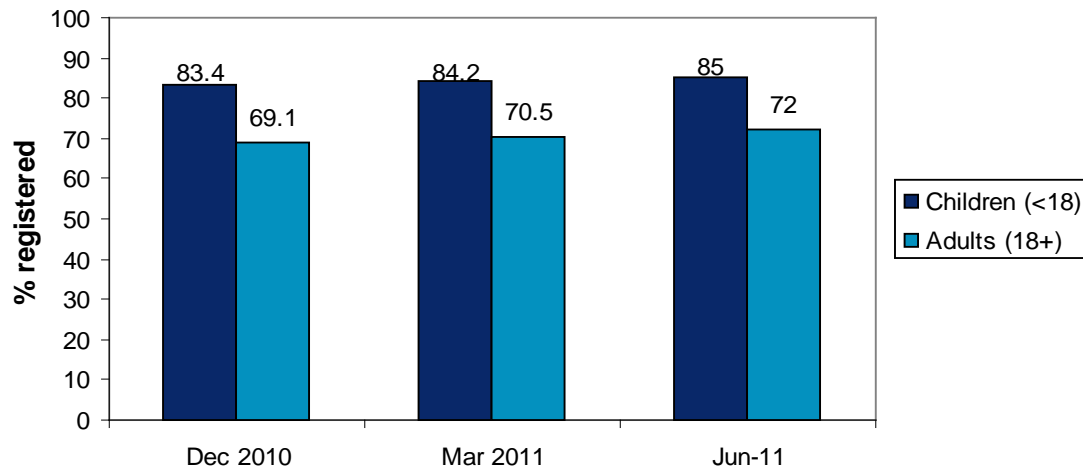
This release provides information on NHS General Dental Services (GDS) registrations as at 30<sup>th</sup> June 2011. Information on the participation (contact with an NHS dentist) of these registered patients can also be found in this release.

### Key Points

At 30<sup>th</sup> June 2011:

- The level of the Scottish population (all ages) registered with an NHS GDS dentist was 74.6%, up from 73.2% as at 31<sup>st</sup> March 2011.
- The 6-12 age group had the highest level of population registered (96.2%) with an NHS GDS dentist.
- Among mainland NHS boards, both NHS Ayrshire & Arran and NHS Greater Glasgow & Clyde had the highest level of children registered (85.6%) and NHS Lanarkshire the highest level of adults registered (78.4%).
- At Scotland level, the rate of participation in NHS General Dental Services among registered patients over the last 2 years was 79.5% for adults and 88.2% for children.
- Participation rates for children were highest in NHS Borders (92.6%) and lowest in NHS Western Isles (74.3%), while rates for adults were highest in NHS Borders (87.2%) and lowest in NHS Orkney (63%).

## Percentage of children & adults registered with a GDS dentist in Scotland; December 2010 to June 2011



Source: ISD Scotland; MIDAS (Management Information & Dental Accounting System).

## Background

Since June 2010, ISD has been reporting registration levels based on the geography of patients' home addresses, rather than on the geography of the dental practice. Participation is a measure of patient attendance at an NHS general dental practice for treatment, registration or other form of contact within the last two years as at 30th September 2010. This measure will further support data already available on NHS dental registrations and the introduction of [non-time-limited registration policy](#).

## Contact

**Scott Buchanan**  
Information Analyst  
[scott.buchanan@nhs.net](mailto:scott.buchanan@nhs.net)  
0131 275 6112

**Stephen Watson**  
Information Analyst  
[stephenwatson@nhs.net](mailto:stephenwatson@nhs.net)  
0131 275 7151

## Further Information

Further information can be found in the [Full Publication Report](#) or on the [ISD website](#)

### About ISD

Scotland has some of the best health service data in the world combining high quality, consistency, national coverage and the ability to link data to allow patient based analysis and follow up. Information Services Division (ISD) is a business operating unit of NHS National Services Scotland - and has been in existence for over 40 years. We are an essential support service to NHSScotland and the Scottish Government Health Department and others, responsive to the needs of NHSScotland as the delivery of health and social care evolves.

### Official Statistics

Information Services Division (ISD) is the principal and authoritative source of statistics on health and care services in Scotland. ISD is designated by legislation as a producer of 'Official Statistics'. Our official statistics publications are produced to a high professional standard and comply with the Code of Practice for Official Statistics. The Code of Practice is produced and monitored by the UK Statistics Authority which is independent of Government. Under the Code of Practice, the format, content and timing of statistics publications are the responsibility of professional staff working within ISD.

Further information on ISD's statistics, including compliance with the Code of Practice for Official Statistics, and on the UK Statistics Authority, is available on the [ISD website](http://www.isdscotland.org/About-ISD/About-Our-Statistics/) [www.isdscotland.org/About-ISD/About-Our-Statistics/](http://www.isdscotland.org/About-ISD/About-Our-Statistics/)