

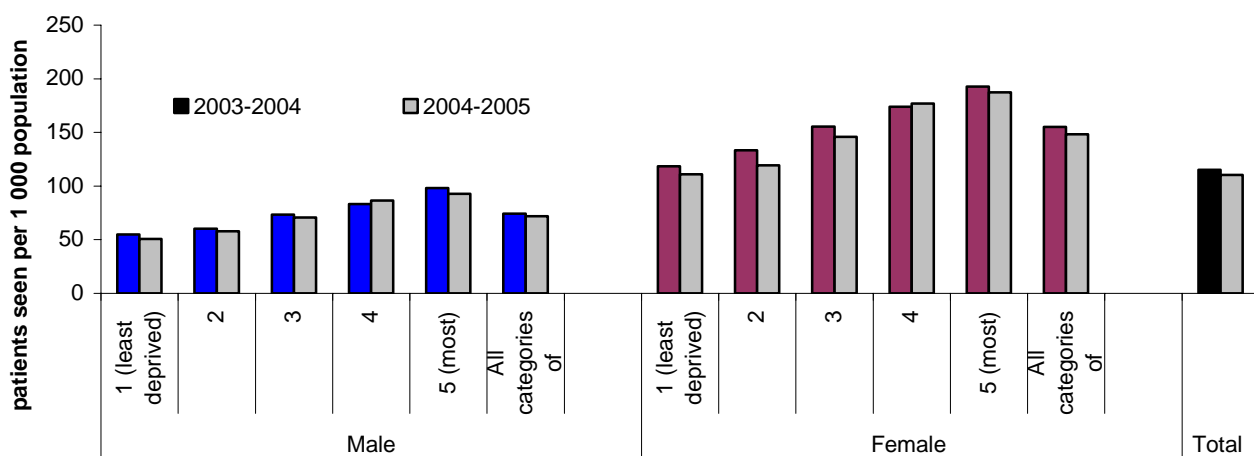


## Delivering our aims, refining our plans

We continue to believe that better information allows better decisions to be taken and better care to be delivered. Recently, senior managers at ISD have assisted us in conducting a strategic review of our programme activities and we have slightly revised our programme plan. We will continue to focus on: implementation of the Mental Health Information Strategy; testing the datasets we have developed; aiding access to national data; and ensuring that required management data can be obtained, as far as possible, from clinical communication. For more details contact [alastair.philp@nhs.net](mailto:alastair.philp@nhs.net).

## Improving access to nationally consistent information: graph of the month

Annual prevalence rates for Depression and Anxiety per 1000 population for Scotland<sup>1</sup>; years ending 31 March 2004 and 2005<sup>2,3</sup>; by sex and deprivation quintile, standardised for age.



1 Source: ISD Practice Team Information (includes patient contacts with practice nurses, district nurses and health visitors. Population source: Community Health Index (CHI) record, ISD Scotland, as at September 2003 and September 2004. This data was previously published on the Scottish Public Health Observatory website at [http://www.scotpho.org.uk/web/site/home/Healthwell-beinganddisease/MentalHealth/mental\\_keypoints.asp](http://www.scotpho.org.uk/web/site/home/Healthwell-beinganddisease/MentalHealth/mental_keypoints.asp).

2. Based on 45 and 44 practices that collected and submitted PTI data, years ending March 2004 and 2005 respectively. ISD's revised Standard Morbidity Groupings (SMG) for both 'Depression & other affective disorders' and 'Anxiety & other neurotic, stress-related, & somatoform disorders' were used.

## Building consensus on what information to share and how

Test implementation of the **Information Core for Integrated Care (ICIC)** should start in Ayrshire and Arran and Borders within the next few weeks. The purpose of these tests is to ensure that information can be collected consistently into existing mental health systems by participating community mental health teams (CMHTs). Dumfries and Galloway will follow, hopefully during March. Forth Valley and Lothian are also interested in participating in test implementation and discussions are ongoing with relevant CMHTs.

We have also invested considerable time drafting a formal consultation paper on two mental health datasets we have been working on over the past few years - the Information Core for Integrated Care and the **Psychiatric Inpatient Clinical Discharge Summary Information Set (PIC-DSIS)**. This consultation paper contains detail on the content of the datasets and has now been issued to a wide number of stakeholders. Your comments will help us ensure that the datasets meet the information needs of those providing care to people with mental health problems. For more details contact [Fiona.Black@isd.csa.scot.nhs.uk](mailto:Fiona.Black@isd.csa.scot.nhs.uk) (ICIC) or [Margaret.Mason@isd.csa.scot.nhs.uk](mailto:Margaret.Mason@isd.csa.scot.nhs.uk) (PIC-DSIS). Or visit <http://www.clinicaldatasets.scot.nhs.uk/>.

## Supporting national policy developments

Our proposal for an **awareness-raising campaign to support cultural and behavioural change** was presented to the January meeting of the **eHealth programme board** (and is available at their website). It was well received but there is a desire to establish the new governance structure for the eHealth Programme before embarking on such work, which will be necessary across the whole of NHSScotland. For more information contact [alastair.philp@nhs.net](mailto:alastair.philp@nhs.net).