

Scottish Breast Screening Programme Statistics 2014/15



Annual update to 31 March 2015

Publication date – 19 April 2016

Contents

Introduction.....	2
Main points	3
Results and Commentary	4
NHSBSP Performance Standards	4
Uptake.....	5
Cancer detection.....	7
Breast screening outcomes.....	7
Pre-operative diagnosis rates	10
Glossary	11
List of Tables	12
Contact	13
Further Information	13
Rate this publication	13
A1 – Background Information.....	14
A2 – Publication Metadata	15
A3 – Early Access details (including Pre-Release Access).....	18
A4 – ISD and Official Statistics	19

Introduction

The Scottish Breast Screening Programme (SBSP) is part of a UK-wide programme of free mammographic screening for breast cancer, which was set up in 1988 with the aim of reducing disease-specific mortality. Since full national coverage was attained in 1991 there have been over 3.1 million screening episodes and in excess of 25,000 breast cancers diagnosed.

In Scotland, women aged 50-64 years were invited for a routine screen once every three years until 2003/04, when the age range for invitation was extended to include women up to the age of 70 years. This expansion was phased in throughout the country over a three year round of screening. Women over 70 years are still screened three-yearly on request.

Up until 2007/08, the screening method used in Scotland consisted of two mammographic views at first screen and one view at subsequent screens. In [Better Cancer Care, An Action Plan](#) the Scottish Government affirmed its commitment to the implementation of two view screening at every screening appointment by April 2010. In 2008/09 a phased roll out of two views commenced and was completed in March 2010.

Within Scotland (as part of the SBSP), information and performance data are compiled by ISD on an annual basis. The UK-wide NHS Breast Screening Programme (NHSBSP) Performance Standards, in which minimum and target standards are specified, are the means by which this information is evaluated. Details on the NHSBSP Performance Standards are specified in [Consolidated Guidance on Standards for the NHS Breast Screening Programme, NHSBSP Publication no. 60](#).

The breast screening year runs from 1 April to 31 March, this release contains data up to 31 March 2015.

Women are invited to attend screening once every three years and it is more informative to examine trends in performance by three-year rolling periods than single years. Therefore the NHSBSP Performance Standards are measured and reported by both individual year, and three year rolling periods.

Trends in three-year rolling NHSBSP Performance Standards, for women aged 50-70, are also included within this publication and are presented from 1 April 2006. Previously published trends in NHSBSP Performance Standards, for women aged 50-64, are available to 31 March 2009 within the Tables and Charts section of the [Breast Screening](#) website.

Additional breast screening statistics, including attendance, uptake by appointment type, biopsy results and outcomes are also included within this publication.

Previously published trends in uptake by deprivation category are available in the Tables and Charts section of the [Breast Screening](#) website.

All breast screening statistics included within this publication can be found on the [Breast Screening](#) homepage of the ISD website.

Main points

NHS Breast Screening Programme performance standards, for the three year period 1 April 2012 to 31 March 2015:

- The uptake rate in Scotland has fallen slightly by 0.4 percentage points from 72.9% in 2011-14 to 72.5% in 2012-15. The results for both periods exceed the 70% minimum performance standard.
- All but three NHS Boards achieved the 70% minimum performance standard for uptake; NHS Greater Glasgow and Clyde (67.7%), NHS Lanarkshire (69.4%) and NHS Lothian (69.8%).
- The invasive cancer detection rate, for women aged 53-70 years with a previous screen within five years of last attendance, was 6.5 per 1,000 women screened. This is a slight decrease from the previous three-year period 2011-14 figure of 6.8 per 1,000 women screened.

In 2014/15:

- All but 1 of the 13 NHS Breast Screening Programme minimum performance standards were achieved and all but 2 of the 11 targets were met.
- 1,362 cases of screen detected breast cancer were diagnosed in women of all ages.
- Of these over 80% (1,114 cases) of cancers detected were invasive, of which nearly three out of five (59.4%) were less than 15 mm in size and unlikely to be detected by physical examination.

Results and Commentary

This release contains breast screening statistics for Scotland by single year and three-year rolling period.

NHS Breast Screening Programme Performance Standards

Table 1 shows that in 2014/15 all but 1 of the 13 minimum performance standards were achieved (Recalled for assessment rate) and all but 2 of the 11 targets were met (Uptake rate and Recalled for assessment rate).

Table 1: Performance data for NHSBSP standards^{1,2,3} in Scotland, 2014/15⁴.

Standard	Appointment type ¹	Age group	Minimum Standard	Target	Result 2014/15
Uptake rate (percentage of women invited)	All routine appointments	50-70 years	>= 70%	>= 80%	72.8%*
Invasive cancer detection rate (per 1,000 women screened)	Routine- Initial screen (Prevalent) in response to first invitation	50-52 years	>= 2.7	>= 3.6	5.0*
	Routine- Subsequent screen (Incident) (previous screen within 5 years)	53-70 years	>= 3.1	>= 4.2	6.3*
Small (<15mm) invasive cancer detection rate (per 1,000 women screened)	Routine- Initial screen (Prevalent) in response to first invitation	50-52 years	>= 1.5	>= 2.0	2.7*
	Routine- Subsequent screen (Incident) (previous screen within 5 years)	53-70 years	>= 1.7	>= 2.3	3.8*
Non-invasive cancer detection rate (per 1,000 women screened)	Routine- Initial screen (Prevalent) in response to first invitation	50-52 years	>= 0.4	-	1.6*
	Routine- Subsequent screen (Incident) (previous screen within 5 years)	53-70 years	>= 0.5	-	1.3*
Standardised Detection Ratio (SDR) (observed invasive cancers detected divided by the number expected given the age distribution of the population)	Routine-All initial screens (Prevalent) and Subsequent screen (Incident) (previous screen within 5 years)	50-70 years	>= 0.85	>= 1.0	1.46*
Recalled for assessment rate (percentage of women screened)	Routine- Initial screen (Prevalent) in response to first invitation	50-52 years	< 10%	< 7%	10.5%
	Routine- Subsequent screen (Incident) (previous screen within 5 years)	53-70 years	< 7%	< 5%	3.6%*
Early recall rate (percentage of women screened)	All appointment types ⁵	50-70 years	< 0.5%	<= 0.25%	0.01%*
Benign biopsy rate (per 1,000 women screened)	Routine- Initial screen (Prevalent) in response to first invitation	50-52 years	< 3.6	< 1.8	1.5*
	Routine- Subsequent screen (Incident) (previous screen within 5 years)	53-70 years	< 2.0	< 1.0	0.4*

1. NHS Breast Screening Programme (NHSBSP) standards as specified in [Consolidated Guidance on Standards for the NHS Breast Screening Programme, NHSBSP Publication no. 60 Version 2](#).

2. Females aged 50-70 only.

3. Routine appointments only, self/GP referral and early recall appointments are excluded.

4. Financial year runs from 1 April to 31 March.

5. Includes self/GP referral and early recall appointments in addition to routine appointments.

* Met minimum standard

Detailed results on all NHSBSP Performance Standards, for both one-year and three-year rolling periods, can be found within the Tables and Charts section on the [Breast Screening](#) homepage.

Uptake

For the latest three-year period, the uptake rate in Scotland has fallen slightly by 0.4 percentage points from 72.9% in 2011-14 to 72.5% in 2012-15 (Table 2). The results for both periods exceeded the 70% minimum performance standard.

All but three NHS Boards achieved the 70% minimum performance standard for uptake; NHS Greater Glasgow and Clyde (67.7%), NHS Lanarkshire (69.4%) and NHS Lothian (69.8%)(Table 2 and Figure 1).

The mainland NHS Board with the highest uptake rate for 2012-15 was NHS Grampian at 80.1% (Table 2 and Figure 1).

Table 2: Trend in uptake rate¹ by NHS Board, three-year rolling periods, (2006-09 to 2012-15)^{2,3,4}.

NHS Board of Residence	Uptake rate (%)						
	2006-09	2007-10	2008-11	2009-12	2010-13	2011-14	2012-15
Ayrshire & Arran	74.8	74.6	75.2	75.1	74.7	73.4	73.0
Borders	79.1	79.1	79.1	78.0	77.8	77.0	76.0
Dumfries & Galloway	78.4	78.6	78.6	78.3	77.8	77.5	77.0
Fife	74.0	73.7	73.8	74.0	72.1	71.8	71.1
Forth Valley	75.3	74.5	74.8	74.7	74.1	72.1	72.1
Grampian	81.5	81.1	81.2	81.4	80.8	80.3	80.1
Greater Glasgow & Clyde	71.0	71.1	70.8	69.8	68.8	67.8	67.7
Highland	79.7	79.6	79.8	79.4	78.1	77.6	77.6
Lanarkshire	71.4	71.7	72.0	71.6	70.8	70.1	69.4
Lothian	71.9	72.0	71.8	71.7	70.7	70.4	69.8
Orkney	86.1	87.0	87.1	87.2	84.7	84.7	84.6
Shetland	86.8	86.4	85.6	85.6	86.0	84.4	84.4
Tayside	79.3	79.2	78.4	77.3	76.9	76.6	76.3
Western Isles	80.6	80.6	80.0	79.7	79.8	80.2	80.6
Scotland	74.9	74.9	74.9	74.5	73.5	72.9	72.5

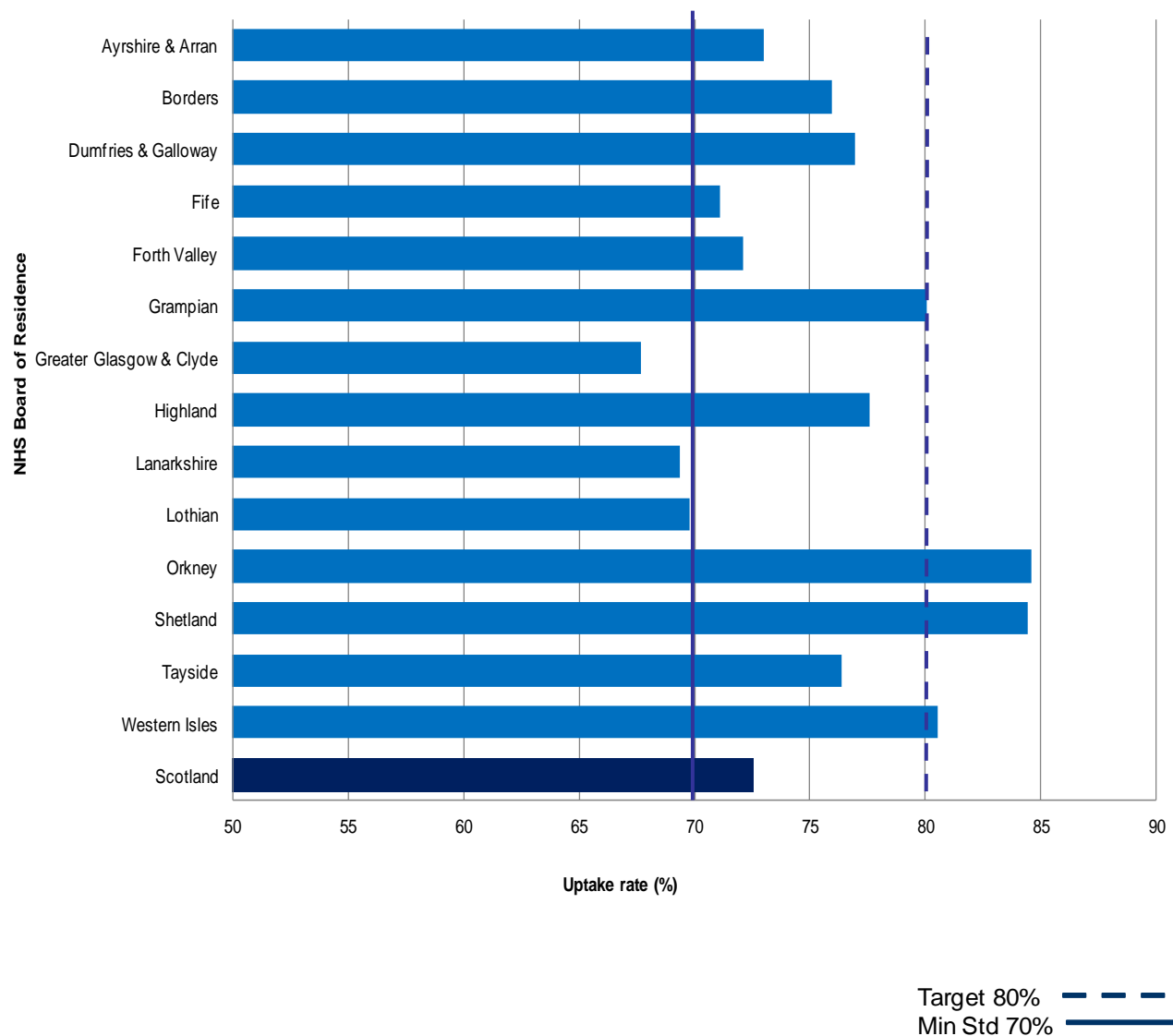
1. Routine appointments only, self/GP referral and early recall appointments are excluded.

2. Three-year periods run from 1 April to 31 March.

3. Women are invited to attend screening once every three years and NHS Boards are not necessarily screened evenly throughout the three year period.

4. Females aged 50-70 only.

Figure 1: Uptake rate¹ by NHS Board by three-year rolling period 2012-15^{2,3,4}.



1. Routine appointments only, self/GP referral and early recall appointments are excluded.
2. Three-year periods run from 1 April to 31 March.
3. Women are invited to attend screening once every three years and NHS Boards are not necessarily screened evenly throughout the three year period.
4. Females aged 50-70 only.

Please note that the horizontal axis on this chart does not start at the origin (zero).

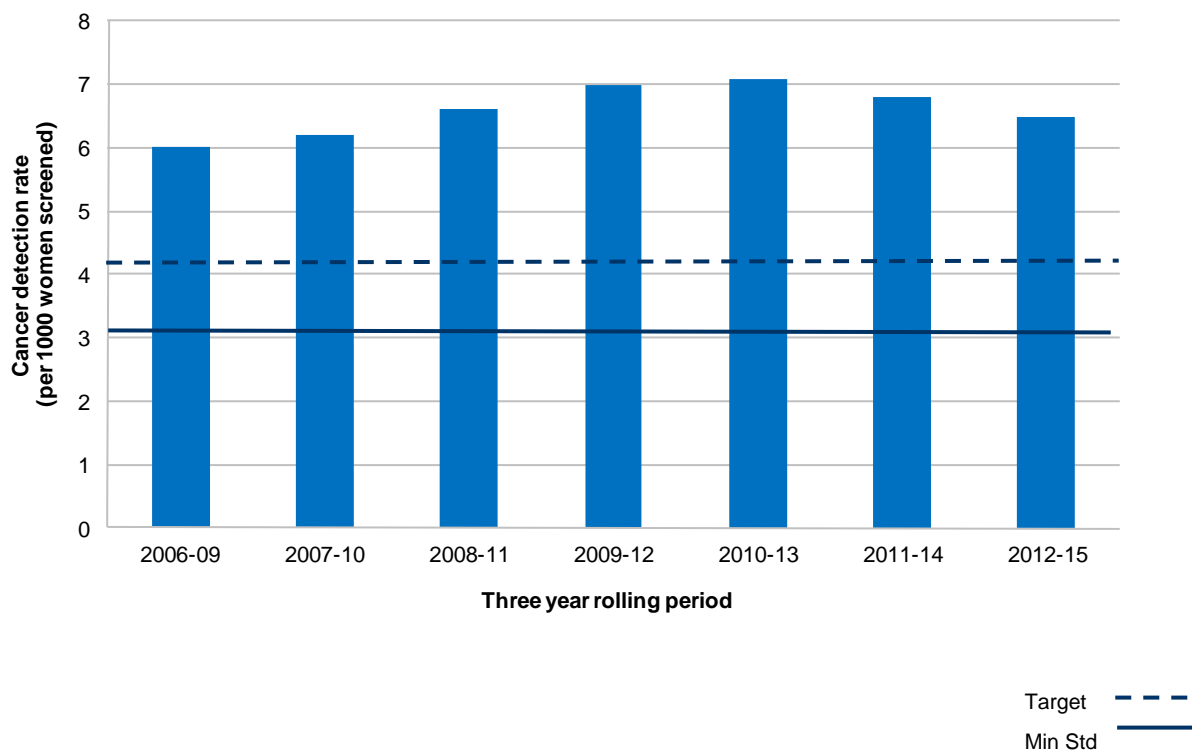
Cancer detection

A measure of the effectiveness of the screening process is in monitoring the invasive cancer detection rate for those women in the incident round of screening. That is, monitoring the detection rate of those women who have had a screen within five years of their initial screen.

The invasive cancer detection rate for the latest three-year period 2012-15, for women aged 53-70 years with a previous screen within five years of last attendance, was 6.5 per 1,000 women screened. This is a slight decrease from the previous three-year period 2011-14 which was 6.8 per 1,000 women screened.

The increase in rates from 2008-11 may be due to the implementation of two view screening into the screening programme. The phased implementation of the two view screening at each subsequent round started in 2008/09 and was completed by 2010/11.

Figure 2: Trend in invasive cancer detection rates¹ for Scotland, three-year rolling periods (2006/09 to 2012/15)^{2,3,4}.



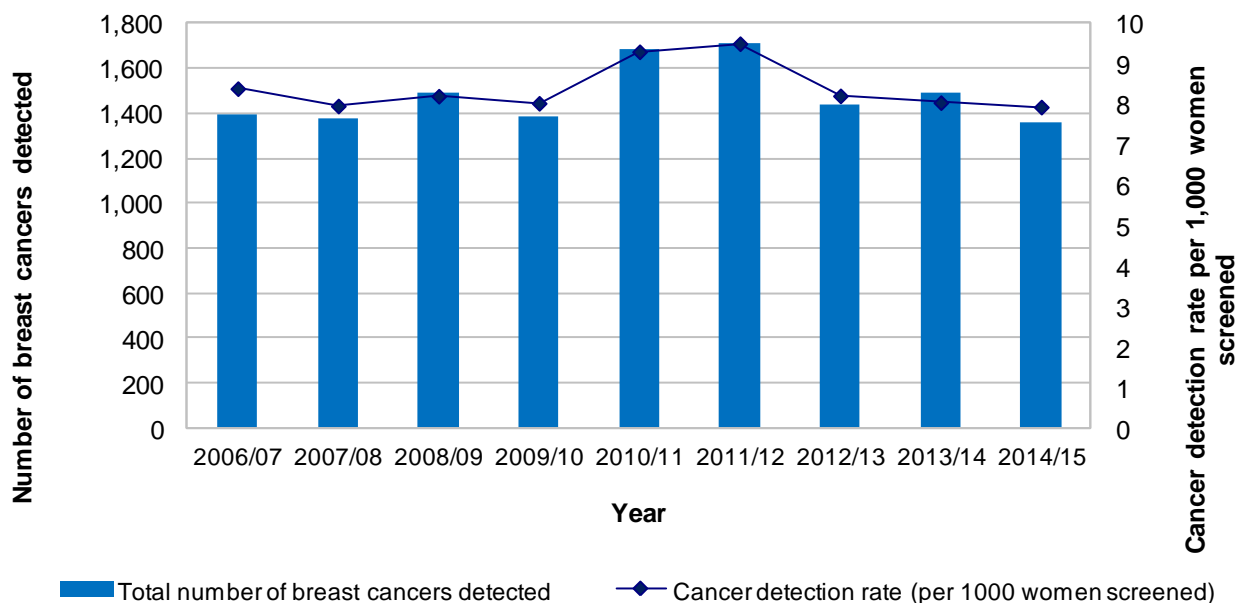
1. Routine appointments only, self/GP referral and early recall appointments are excluded.
2. Three-year periods run from 1 April to 31 March. Women are invited to attend screening once every three years and NHS Boards are not necessarily screened evenly throughout the three year period.
3. During 2008/09, a phased implementation of two view screening at each subsequent round was introduced into the screening programme and this was completed in 2010/11.
4. Females aged 53-70 with a previous screen within 5 years of last attendance

Breast screening outcomes

The number of screen detected breast cancers in women of all ages in 2014/15 was 1,362; a decrease of 125 from 2013/14 (Figure 3).

The increase in numbers and rates for 2010/11 and 2011/12 may be due to the implementation of two view screening into the screening programme that started in 2008/09.

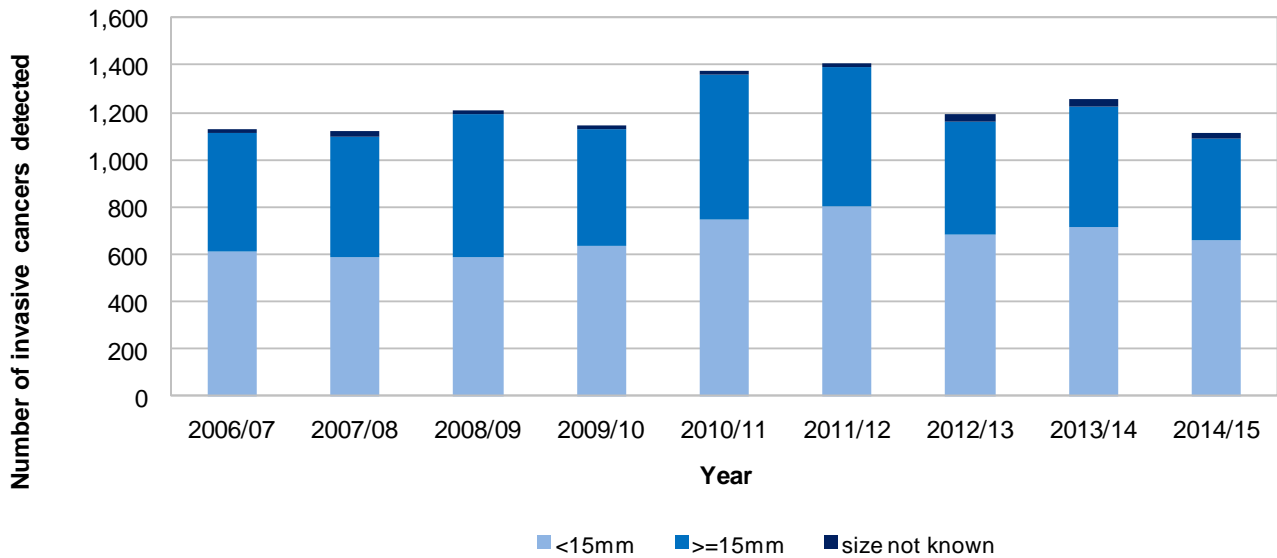
Figure 3: Trends in the number of breast cancers detected, and cancer detection rate per 1,000 women screened^{1,2,3}, Scotland, 2006/07 to 2014/15⁴.



1. Figures are for women of all ages.
2. Includes self/GP referral and early recall appointments in addition to routine appointments.
3. During 2008/09, a phased implementation of two view screening at each subsequent round was introduced into the screening programme and this was completed in 2010/11.
4. Financial years run from 1 April to 31 March.

In 2014/15, over 80% (1,114) of the cancers detected in women of all ages were invasive breast cancers. Nearly three out of five (59.4%) of these were less than 15 mm in size (Figure 4). Such small tumours are unlikely to be detected by physical examination, highlighting the importance of screening in the early detection of breast cancer.

Figure 4: Trends in the number of invasive breast cancers detected by size^{1,2,3} in Scotland, 2006/07 to 2014/15⁴.

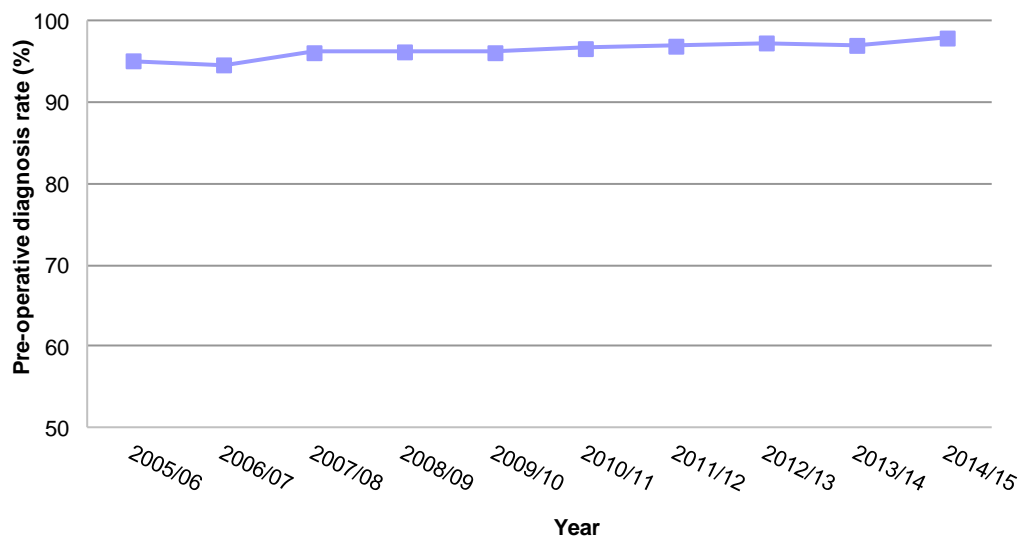


1. Figures are for women of all ages.
2. Includes self/GP referral and early recall appointments in addition to routine appointments.
3. During 2008/09, a phased implementation of two view screening at each subsequent round was introduced into the screening programme and this was completed in 2010/11.
4. Financial years run from 1 April to 31 March.

Pre-operative diagnosis rates

In 2014/15 the proportion of cancers for which diagnosis was confirmed pre-operatively was 98.0%. The rate has generally increased slightly over the last ten years from a figure of 95.2 % in 2005/06. The implementation of radiological biopsy techniques within screening centres over 10 years ago has significantly reduced the need for women to go for diagnostic surgery.

Figure 5: Trend in pre-operative diagnosis rates^{1,2} in Scotland, 2005/06 to 2014/15³.



1. A pre-operative diagnosis is defined as a malignant result from FNA cytology or a core biopsy procedure.
 2. Figures are for women of all ages.
 3. Financial years run from 1 April to 31 March.
- Please note that the vertical axis on this chart does not start at the origin (zero).

Glossary

Breast screening terms relating to the data within this publication can be found within our [Glossary](#) document on the [Breast Screening](#) homepage.

For the purpose of this publication 'uptake' and 'attendance' are synonymous.

List of Tables

Table No.	Name	Time period	File & size
1	Performance standards	1 April 2014 to 31 March 2015	Excel [23kb]
2	Performance standards (three-year rolling periods)	1 April 2006 to 31 March 2015	Excel [144kb]
3	Uptake by NHS Board	1 April 2006 to 31 March 2014	Excel [33 kb]
4	Historical trends in Performance standards (three-year rolling periods)	1 April 2001 to 31 March 2009	Excel [165kb]
5	Historical trends in Uptake by NHS Board	1 April 1991 to 31 March 2009	Excel [46kb]
6	Uptake by deprivation	1 April 2003 to 31 March 2012	Excel [41kb]
7	Uptake by deprivation (three-year combined periods)	1 April 2003 to 31 March 2012	Excel [34kb]
8	Historical trends in uptake by deprivation	1 April 1990 to 31 March 2008	Excel [35kb]
9	Historical trends in uptake by deprivation (three-year combined periods)	1 April 1990 to 31 March 2008	Excel [33kb]
10	Attendance	1 April 2005 to 31 March 2015	Excel [26kb]
11	Uptake by type of invitation	1 April 2008 to 31 March 2015	Excel [29kb]
12	Biopsy results	1 April 2005 to 31 March 2015	Excel [37kb]
13	Outcomes	1 April 2006 to 31 March 2015	Excel [43kb]

Contact

John Quinn

Senior Information Analyst

j.quinn@nhs.net

0131 275 6573

Douglas Clark

Information Analyst

douglasclark@nhs.net

0131 275 7182

Further Information

Further information can be found on the [ISD website](#)

Information on major policy changes and the key developments relating to Breast Screening in Scotland since the start of the programme is available within our [Milestones table](#) on the [Breast Screening](#) homepage.

For general enquiries about Cancer screening programmes, please contact Carol Colquhoun, National Screening Coordinator at carol.colquhoun@nhs.net

Rate this publication

Please [provide feedback](#) on this publication to help us improve our services.

Appendix

A1 – Background Information

The UK was one of the first countries in the world to establish a national population-based breast screening programme. The UK National Health Service Breast Screening Programme (NHSBSP), a UK-wide programme of free mammographic screening for breast cancer, was introduced in 1988 following a recommendation from a working party established by the four UK Departments of Health and chaired by Sir Patrick Forrest. The working party concluded that there was evidence that screening for breast cancer could reduce mortality from the disease by up to 30%.

Within Scotland, data are collected by each of the six screening centres (which are supported by 19 mobile units) and retained on the Scottish Breast Screening Programme (SBSP) Information System. The SBSP Information System maintains data holding information relating to each step as a woman moves through her screening episode, including comprehensive radiological, diagnostic and treatment information. More information on the SBSP dataset can be found on our [Data sources](#) page. Data are routinely extracted from the SBSP Information system and analysed by ISD Scotland to help evaluate and monitor the effectiveness of the programme in Scotland. All analytical support for the Scottish Breast Screening Programme is provided by ISD Scotland.

Revisions

In Scotland, women aged 50-64 years were invited for a routine screen once every three years until 2003/04, when the age range for invitation was extended to include women up to the age of 70 years. This expansion was phased in throughout the country over a three year round of screening.

Up until July 2009, the NHSBSP Performance Standards were published based on women aged 50-64; to reflect the expansion of the age range, they were extended to include women up to the age of 70 in the July 2010 publication. Previously published trends in NHSBSP Performance Standards to 31 March 2009, for women aged 50-64, are still available.

For continuity of reporting and to allow for trend analysis in the 50-70 age group some tables have been re-produced back to 2005.

A2 – Publication Metadata

Metadata Indicator	Description
Publication title	Scottish Breast Screening Programme Statistics 2014-15
Description	Annual breast screening statistics up to 31 March 2015; including National NHS Breast Screening Programme Performance Standards, attendance figures, uptake rates by NHS Board, cancer detection rates, biopsy results, screening outcomes and uptake by deprivation.
Theme	Health and Social Care
Topic	Conditions and Diseases
Format	Excel workbooks
Data source(s)	Scottish Breast Screening Programme (SBSP) Information System
Date that data are acquired	January 2016
Release date	Tuesday 19 April 2016
Frequency	Annual
Timeframe of data and timeliness	Data up to 31 March 2015. No delays between receipt and processing of data for publication.
Continuity of data	<p>Uptake rate by deprivation category (50 to 64 years) is reported from 1990.</p> <p>Uptake rate by NHS Board (50 to 64 years) are reported from 1991.</p> <p>Attendances by appointment type and Biopsy results are reported from 2005. Historic data back to 1991 is available from a previous publication: https://isdscotland.scot.nhs.uk/Health-Topics/Cancer/Publications/2014-04-29/Attendance.xls</p> <p>Three-year NHSBSP Performance standards (50 to 64 years) are reported from 2001.</p> <p>Uptake by deprivation category (50 to 70 years) is reported from 2003.</p> <p>Data is reported from 2006 for the following tables:</p> <ul style="list-style-type: none"> - Uptake by NHS Board (50 to 70 years), - Three year NHSBSP Performance standards (50 to 70 years), - Outcomes. <p>Uptake rate by type of invitation is reported from 2008.</p>

Revisions statement	Figures contained within this publication should not be subject to change in future publications unless changes are made to the NHSBSP Performance Standards or the cohort eligible for screening. In this case, for continuity of reporting, some tables may have to be re-produced.
Revisions relevant to this publication	N/A
Concepts and definitions	Please see Breast Screening FAQ and Glossary document found at the bottom of the Breast Screening homepage.
Relevance and key uses of the statistics	<p>ISD's Scottish Breast Screening Programme statistics are designed for monitoring and evaluating the effectiveness of the Scottish Breast Screening Programme, including progress against specific national standards and performance indicators. The statistics are used for a variety of other purposes, including:</p> <ul style="list-style-type: none"> • informing Scottish Government planning, including NHS spending and the development of the Scottish cancer care action plan; • informing Health Boards' planning and commissioning of cancer services; • health services research and clinical audit; • promoting changes in societal behaviour, such as increasing screening uptake rates; and • providing information to compare with UK and international health data.
Accuracy	Breast screening data are subject to validation and quality assurance procedures and checks by the Quality Assurance Reference Committee (QARC).
Completeness	At time of extraction, data for the most recent year are estimated to be complete. See above note on Revisions.
Comparability	Breast Screening data are regularly compared mainly to the UK as a whole (e.g. KC62 and BASO). In such comparisons, data are provided mainly at national (Scotland) level.
Accessibility	It is the policy of ISD Scotland to make its web sites and products accessible according to published guidelines .
Coherence and clarity	<p>All Breast Screening tables are accessible via the Breast Screening homepage.</p> <p>Breast Screening data are presented within Excel spreadsheets for each table.</p>
Value type and unit of measurement	Number of women invited to attend for screening and number of women screened are reported as a count; uptake/attendance, biopsy results, recall for assessment, early recall are reported as a percentage; cancer detection is reported as a rate per 1,000 women screened and as

	Standardised detection ratios. Number e.g. 1.1
Disclosure	The ISD protocol on Statistical Disclosure Protocol is followed. For this publication, at the levels of aggregation presented, the risk of disclosure was assessed as being low risk and so no further statistical disclosure control methods were employed.
Official Statistics designation	National Statistics
UK Statistics Authority Assessment	Assessment by UK Statistics Authority for National Statistics designation completed.
Last published	21 April 2015
Next published	18 April 2017
Date of first publication	Uptake by deprivation category (50 to 64 years) is reported from 1990. Uptake by NHS Board (50 to 64 years) are reported from 1991.
Help email	nss.isdcancerstats@nhs.net
Date form completed	April 2016

A3 – Early Access details (including Pre-Release Access)

Pre-Release Access

Under terms of the "Pre-Release Access to Official Statistics (Scotland) Order 2008", ISD are obliged to publish information on those receiving Pre-Release Access ("Pre-Release Access" refers to statistics in their final form prior to publication). The standard maximum Pre-Release Access is five working days. Shown below are details of those receiving standard Pre-Release Access.

Standard Pre-Release Access:

Scottish Government Health Department

NHS Board Chief Executives

NHS Board Communication leads

Early Access for Quality Assurance

These statistics will also have been made available to those who needed access to help quality assure the publication:

National Services Division

A4 – ISD and Official Statistics

About ISD

Scotland has some of the best health service data in the world combining high quality, consistency, national coverage and the ability to link data to allow patient based analysis and follow up.

Information Services Division (ISD) is a business operating unit of NHS National Services Scotland and has been in existence for over 40 years. We are an essential support service to NHSScotland and the Scottish Government and others, responsive to the needs of NHSScotland as the delivery of health and social care evolves.

Purpose: To deliver effective national and specialist intelligence services to improve the health and wellbeing of people in Scotland.

Mission: Better Information, Better Decisions, Better Health

Vision: To be a valued partner in improving health and wellbeing in Scotland by providing a world class intelligence service.

Official Statistics

Information Services Division (ISD) is the principal and authoritative source of statistics on health and care services in Scotland. ISD is designated by legislation as a producer of 'Official Statistics'. Our official statistics publications are produced to a high professional standard and comply with the Code of Practice for Official Statistics. The Code of Practice is produced and monitored by the UK Statistics Authority which is independent of Government. Under the Code of Practice, the format, content and timing of statistics publications are the responsibility of professional staff working within ISD.

ISD's statistical publications are currently classified as one of the following:

- National Statistics (ie assessed by the UK Statistics Authority as complying with the Code of Practice)
- National Statistics (ie legacy, still to be assessed by the UK Statistics Authority)
- Official Statistics (ie still to be assessed by the UK Statistics Authority)
- other (not Official Statistics)

Further information on ISD's statistics, including compliance with the Code of Practice for Official Statistics, and on the UK Statistics Authority, is available on the [ISD website](#).

The United Kingdom Statistics Authority has designated these statistics as National Statistics, in accordance with the Statistics and Registration Service Act 2007 and signifying compliance with the Code of Practice for Official Statistics. Designation can be broadly interpreted to mean that the statistics:

- meet identified user needs;
- are well explained and readily accessible;
- are produced according to sound methods, and
- are managed impartially and objectively in the public interest.

Once statistics have been designated as National Statistics it is a statutory requirement that the Code of Practice shall continue to be observed.