

# Scottish Multiple Sclerosis Register National Report 2017

Figures from January 2010 – December 2016

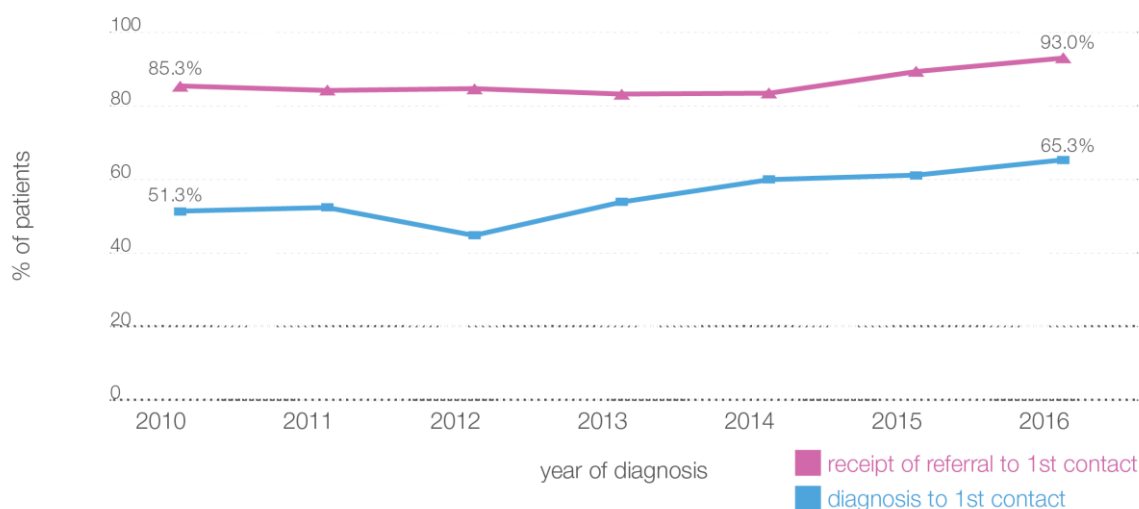
Publication Date – 12 September 2017

This is the seventh national report from the Scottish Multiple Sclerosis Register (SMSR) published by Information Services Division. The report provides information on all patients who were diagnosed by a Neurologist as having a confirmed diagnosis of multiple sclerosis (MS) from January 2010 to December 2016.

## Main Points

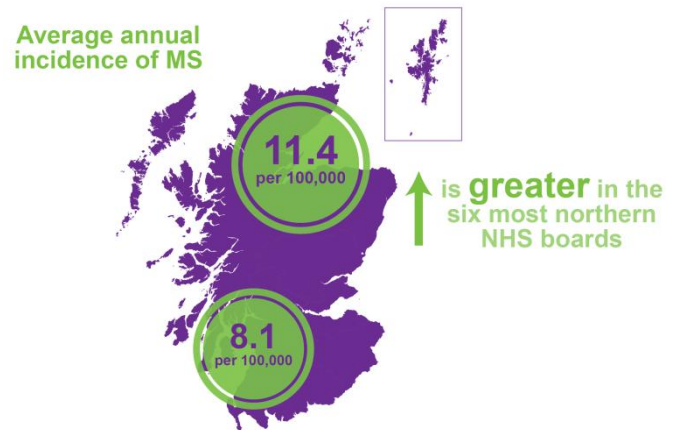
- 65.3% of newly diagnosed patients had contact with a MS Specialist Nurse within 10 days of diagnosis.

Percentage of people with a new diagnosis of MS contacted by an MS specialist nurse within 10 days of confirmed diagnosis Vs percentage contacted within 10 days from receipt of referral, 2010–2016 data



- Once a referral was received by the MS Specialist Nurse, 93% of the patients were contacted within 10 days, an improvement of 4 percentage points since 2015.
- In 2016, 490 new patients with a confirmed diagnosis of MS were added to the MS Register. This brings the total number of newly diagnosed people reported over the seven year period to 3,243.

- The annual incidence shows that more than twice as many women than men were diagnosed with MS.
- In line with previous findings, the average annual incidence of MS in the six most northern NHS Boards is greater than the average for the eight southern NHS Boards.



## Background

The Scottish MS Register is a national Register within the Scottish Healthcare Audits programme at the Information Services Division (ISD) of NHS National Services Scotland. The aim is to improve healthcare for people living with MS in Scotland. Establishing the incidence and interpreting the implications of its demography allows us to facilitate service evaluation and drive health improvement. The data on which this report is produced are provided by Neurologists and MS clinical teams via a standard proforma which incorporates the patient journey from referral to diagnosis, including referral to a MS Specialist Nurse.

## Contact

### Chrissie Watters

Clinical Coordinator, 0131 275 6111

### Iain McDermid

Information Analyst, 0131 275 7419

E: [NSS.ISDscottishmsregister@nhs.net](mailto:NSS.ISDscottishmsregister@nhs.net)

T: 0131 314 1209

Our media spokesperson is **Dr Belinda Weller**, Scottish MS Register Chairperson.

E: [belinda.weller@luht.scot.nhs.uk](mailto:belinda.weller@luht.scot.nhs.uk)

T: 0131 537 2403

Further information can be found in the full report on the Registry website (<http://www.msr.scot.nhs.uk/>) or on the [ISD website](#).

The next update for this publication will be September 2018.

---