

# Publication Report



## **Psychological Therapies Waiting Times in Scotland**

**Quarter ending 31 December 2014**

**Publication date – 24 February 2015**

## Contents

Introduction .....	2
Key points .....	3
How long people waited to start their treatment .....	4
People waiting at the end of the month .....	8
Number of people referred for psychological therapies .....	12
Distribution of wait .....	14
Glossary .....	18
List of Tables.....	19
Contact.....	20
Further Information.....	20
Rate this publication.....	20
A1 – Background Information .....	21
A2 – Data Quality .....	23
A3 – Publication Metadata (including revisions details).....	32
A4 – Early Access details (including Pre-Release Access) .....	35
A5 – ISD and Official Statistics.....	36

## Introduction

This publication contains information about how long people waited to start treatment for psychological therapies provided by the NHS in Scotland. This information has been published quarterly since August 2013. The information in this publication covers the period October to December 2014, with figures from July to September 2014 for reference.

Psychological therapies refer to a range of interventions, based on psychological concepts and theory, which are designed to help people understand and make changes to their thinking, behaviour and relationships in order to relieve distress and to improve functioning. The target applies specifically to psychological therapies for treatment of a mental illness or disorder.

The Scottish Government requires the NHS in Scotland to measure the time people wait for treatment and this includes people waiting for Psychological Therapies. The Scottish Government has set a target for the NHS in Scotland to deliver a maximum wait of 18 weeks from a patient's referral to treatment for Psychological Therapies from December 2014. Following the conclusion of previously planned work on a tolerance level for Psychological Therapies waiting times and engagement with NHS Boards and other stakeholders, the Scottish Government has determined that the Psychological Therapies target should be delivered for at least 90% of patients.

This target includes psychological therapies as defined above. These include psychological therapies listed in 'The Matrix: A guide to delivering evidence based Psychological Therapies in Scotland' at <http://www.nes.scot.nhs.uk/education-and-training/by-discipline/psychology/matrix.aspx> and also those not listed but which clinicians decide are the most appropriate treatment to meet a patient's needs. The target applies: where the therapy is delivered to individuals or groups on a face-to-face basis, by staff trained to recognised standards, operating under appropriate supervision, in dedicated/ focused sessions; where the therapy is delivered through family, health and/or care staff who are being trained or supported to deliver a particular intervention to a named patient/client; to all ages (including CAMH services); in inpatient as well as community settings; in physical health settings where there is associated mental illness such as depression or anxiety, for example chronic pain and cancer; for substance misuse where there is associated mental illness; and for learning disabilities where there is associated mental illness.

The systems for collecting data locally are still being developed, and as a result, some people who had treatment for psychological therapies are not included in this publication. However, the information in this publication does give a good indication of waiting times in most areas of Scotland. The volume of information we have been able to collect from NHS Boards has increased each quarter and we expect this to continue to increase in coming months. The Psychological Therapies HEAT Target, Guidance and Scenarios document was updated in March 2014 to reinforce clarity for Boards on the scope of the target and how to interpret a wide range of scenarios. The revised guidance was issued to Boards and made available on the ISD website at <http://www.isdscotland.org/Health-Topics/Waiting-Times/Psychological-Therapies/>

## Key points

- Waiting times information for Psychological Therapies are developmental. NHS Boards are working with ISD and the Scottish Government to improve the consistency and completeness of the information. The target that at least 90% of people waiting for Psychological Therapies should start treatment within 18 weeks is due for delivery from December 2014.
- NHS Boards have had to develop new systems to enable reporting on Psychological Therapies waiting times.
- During the quarter ending December 2014, just over 10,500 people started treatment for psychological therapies in Scotland. The initial estimates from data at this stage of development indicate that around 81% of people were seen within 18 weeks.

## How long people waited to start their treatment

This section shows waiting times for patients who started their treatment during the period October-December 2014. This information is still developmental. NHS Boards are working with ISD and the Scottish Government to improve the consistency and completeness of the information.

During the period October – December 2014 (see Table 1):

- Just over 10,500 people started their treatment for psychological therapies in Scotland.
- Using adjusted waits where available, 81.4% of people seen for psychological therapies started their treatment within 18 weeks of being referred. Half started their treatment within 8 weeks.
- Using unadjusted waits, 77.1% of people seen for psychological therapies started their treatment within 18 weeks of being referred. Half started their treatment within 10 weeks.

Chart 1 shows the percentage of people seen within 18 weeks split by month for the last two quarters. However, data for successive months are not strictly comparable due to ongoing development of information systems, so small changes from one month to the next should not be interpreted as a significant rise or drop in performance at this stage.

Information by NHS Board is shown in Tables 2 and 3 and Chart 2. While NHS Boards are developing their systems to improve the completeness and consistency of these data, NHS Board figures may not be directly comparable. We expect to be able to make more accurate comparisons by month and NHS Boards in future publications.

**Table 1. Waiting times for people who started their treatment in October - December 2014, NHS Scotland<sup>1</sup>**

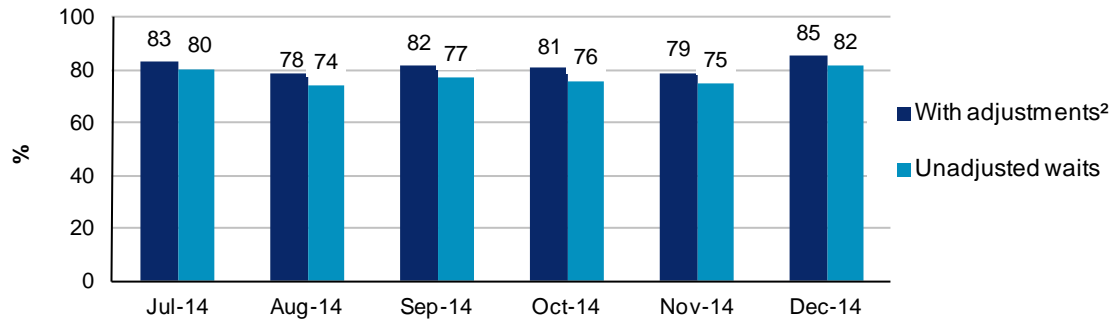
Month	People seen	With adjustments <sup>4</sup>			Unadjusted		
		Seen within 18 weeks (number)	Seen within 18 weeks (%)	Average (median) wait (weeks)	Seen within 18 weeks (number)	Seen within 18 weeks (%)	Average (median) wait (weeks)
Oct 2014	3,872	3,126	80.7	8	2,936	75.8	10
Nov 2014	3,748	2,963	79.1	8	2,810	75.0	10
Dec 2014	2,892	2,464	85.2	7	2,358	81.5	9
<b>Total</b>	<b>10,512</b>	<b>8,553</b>	<b>81.4</b>	<b>8</b>	<b>8,104</b>	<b>77.1</b>	<b>10</b>

### Notes

1. Scotland level data include unadjusted waits for NHS Boards where adjusted waits are not available.
2. For details of adjustments see Table 2.

Information on data quality and data completeness at NHS Board level is available on pages 23-31.

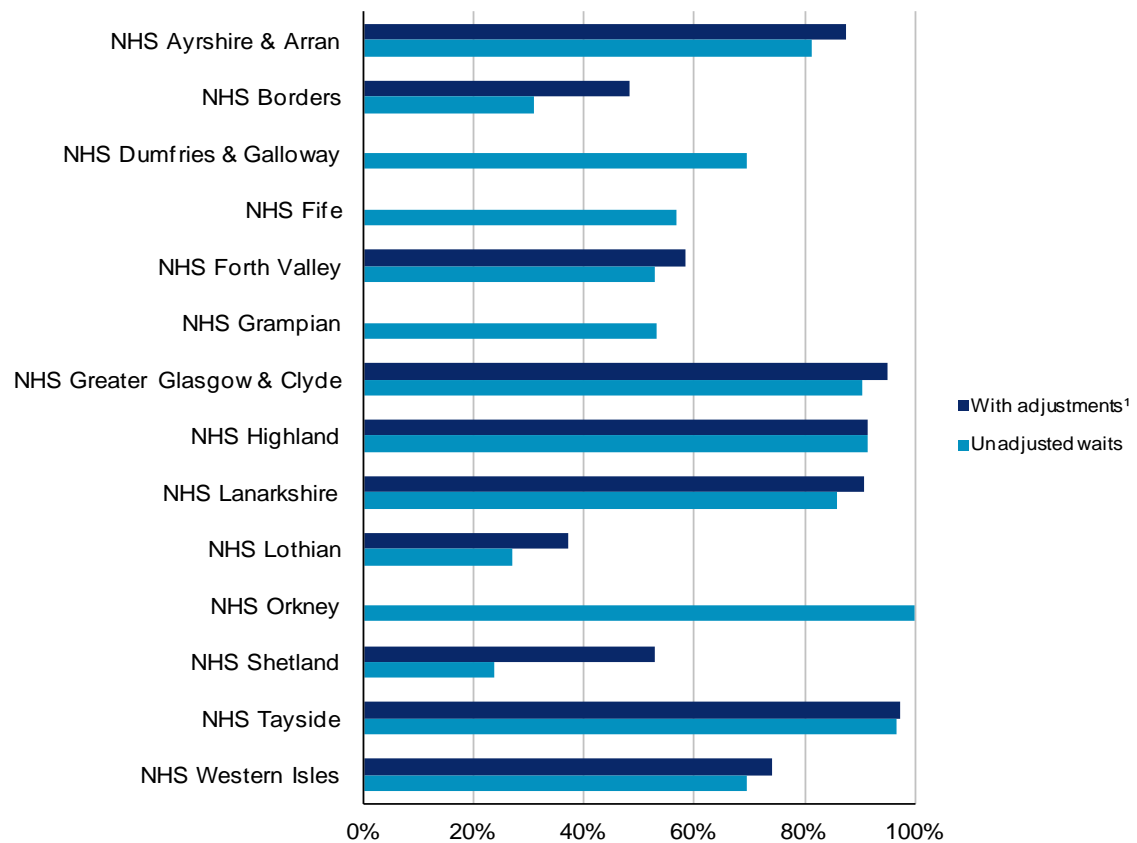
**Chart 1. Percentage of people who started their treatment within 18 weeks, NHS Scotland<sup>1,2</sup> July to December 2014**



Notes

1. Scotland level adjusted data include unadjusted waits for NHS Boards where adjusted waits are not available.
2. For details of adjustments see Table 2.

**Chart 2. Percentage of people who started their treatment within 18 weeks by NHS Board, October - December 2014**



Notes

1. For details of adjustments see Table 2.

Information on data quality and data completeness at NHS Board level is available on pages 23-31.

**Table 2. Waiting times (with adjustments) for people who started their treatment in October - December 2014 by NHS Board**

While NHS Boards are developing their systems to improve the completeness and consistency of these data, NHS Board figures may not be directly comparable.

NHS Board of Treatment	People seen	People seen within 18 weeks (Number)	People seen within 18 weeks (%)	Average (median) wait (weeks)	Waiting time adjustments <sup>1</sup>
<b>NHS Scotland<sup>2,3</sup></b>	10,512	8,553	81.4	8	..
NHS Ayrshire & Arran	1,791	1,568	87.5	6	NA
NHS Borders	266	128	48.1	19	NA, U, RO
NHS Dumfries & Galloway	596	414	69.5	12	Unadjusted
NHS Fife	851	482	56.6	14	Unadjusted
NHS Forth Valley	412	240	58.3	17	NA, U
NHS Grampian	551	292	53.0	18	Unadjusted
NHS Greater Glasgow & Clyde	3,140	2,987	95.1	5	NA
NHS Highland <sup>3</sup>	225	206	91.6	4	NA,U, RO
NHS Lanarkshire	1,020	927	90.9	11	NA,U, RO
NHS Lothian	490	182	37.1	23	NA
NHS Orkney	22	22	100.0	8	Unadjusted
NHS Shetland	17	9	52.9	18	NA, U, RO
NHS Tayside	1,108	1,079	97.4	7	NA, U, RO
NHS Western Isles	23	17	73.9	1	NA, U, RO

#### Notes

.. Data not available

1. Waiting time adjustments:

NA: Non Attendance. Waiting time may be reset if a person misses or rearranges an appointment.

U: Unavailability. Time a person is unavailable may be subtracted from the waiting time.

RO: Refuses Reasonable Offer. Waiting time may be reset if a person declines 2 or more dates.

For further information see page 4.

2. Scotland level data include unadjusted waits for NHS Boards where adjusted waits are not available.

3. Patients seen data for NHS Highland are estimated to be 30% complete at the moment. This is due to delays in the relevant data being extracted in usable form from the new patient management system.

Further information by NHS Board can be found [here](#).

Information on data quality and data completeness at NHS Board level is available on pages 23-31.

**Table 3. Unadjusted waiting times for people who started their treatment in October - December 2014 by NHS Board**

While NHS Boards are developing their systems to improve the completeness and consistency of these data, NHS Board figures may not be directly comparable.

NHS Board of Treatment	People seen	People seen within 18 weeks (Number)	People seen within 18 weeks (%)	Average (median) wait (weeks)
<b>NHS Scotland<sup>1</sup></b>	10,512	8,104	77.1	10
NHS Ayrshire & Arran	1,791	1,454	81.2	8
NHS Borders	266	82	30.8	26
NHS Dumfries & Galloway	596	414	69.5	12
NHS Fife	851	482	56.6	14
NHS Forth Valley	412	218	52.9	18
NHS Grampian	551	292	53.0	18
NHS Greater Glasgow & Clyde	3,140	2,835	90.3	6
NHS Highland	225	206	91.6	4
NHS Lanarkshire	1,020	876	85.9	13
NHS Lothian	490	132	26.9	30
NHS Orkney	22	22	100.0	8
NHS Shetland	17	4	23.5	26
NHS Tayside	1,108	1,071	96.7	8
NHS Western Isles	23	16	69.6	1

Notes

.. Data not available

1. Patients seen data for NHS Highland are estimated to be 30% complete at the moment. This is due to delays in the relevant data being extracted in usable form from the new patient management system.

Further information by NHS Board can be found [here](#).

Information on data quality and data completeness at NHS Board level is available on pages 23-31.



## People waiting at the end of the month

This section presents a summary of waiting times information for psychological therapies for people who are waiting at the end of each month.

This is a useful measure for managers of these services as it can help them take early action to ensure that patient waits do not exceed the target. However this measure does not show how long people actually wait before they received care.

This information is still developmental. NHS Boards are working with ISD and the Scottish Government to improve the consistency and completeness of the information.

At the end of December 2014 (Table 4):

- 16,381 people were waiting to start treatment for psychological therapies in Scotland
- Using adjusted waits where available, 79.1% (12,964) of these had been waiting less than 18 weeks.
- Using unadjusted waits, 76.4% (12,512) of these had been waiting less than 18 weeks.

Chart 3 shows the percentage of people waiting less than 18 weeks, split by month, for the last two quarters. However, data for successive months are not strictly comparable due to ongoing development of information systems, so small changes from one month to the next should not be interpreted as a significant rise or drop in performance.

Information by NHS Board is shown in Tables 5 and 6 and Chart 4. While NHS Boards are developing their systems to improve the completeness and consistency of these data, NHS Board figures may not be directly comparable. We expect to be able to make more accurate comparisons by month and NHS Board in future publications.

**Table 4. Waiting times for people waiting at the end of the month in Scotland.**

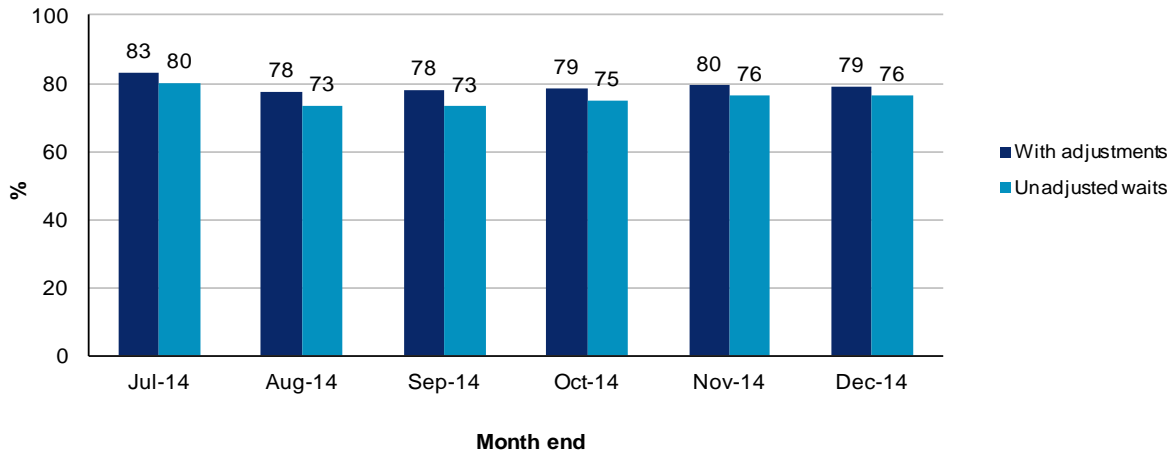
Month End	Total People Waiting	With adjustments <sup>1</sup>		Unadjusted	
		Waiting less than 18 weeks (Number)	Waiting less than 18 weeks (%)	Waiting less than 18 weeks (Number)	Waiting less than 18 weeks (%)
Oct 2014	15,705	12,352	78.7	11,785	75.0
Nov 2014	15,237	12,117	79.5	11,636	76.4
Dec 2014	16,381	12,964	79.1	12,512	76.4

### Notes

1. Scotland level data include unadjusted waits for NHS Boards where adjusted waits are not available.

Information on data quality and data completeness at NHS Board level is available on pages 23-31.

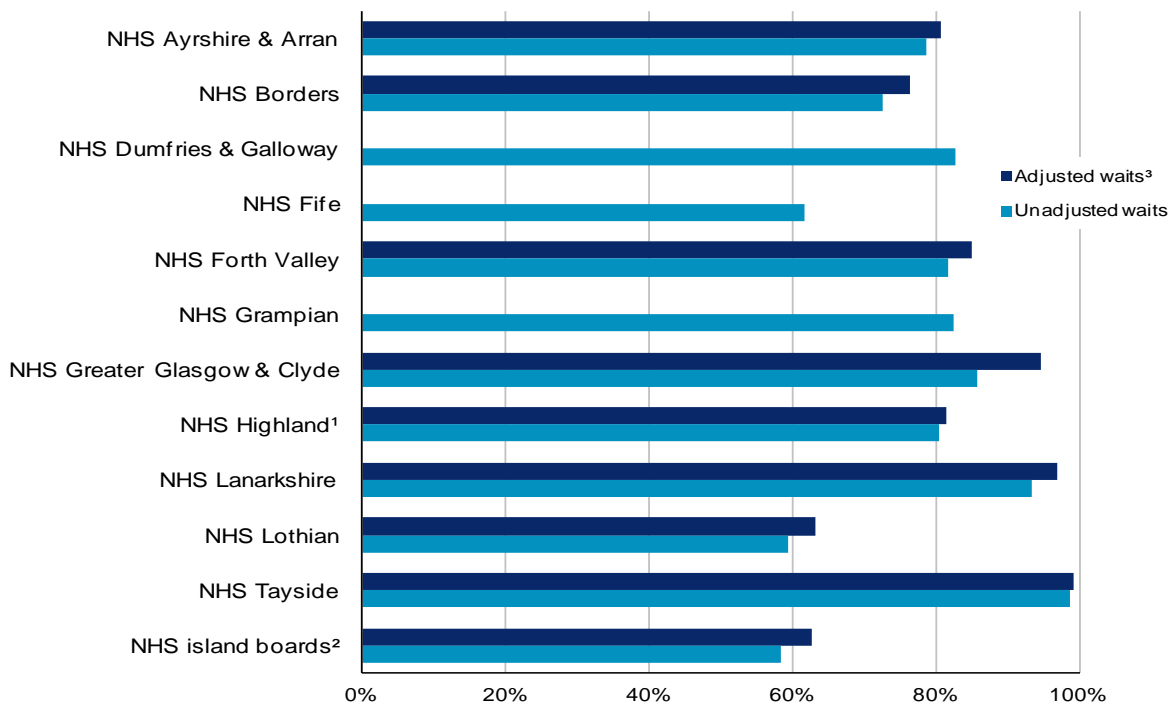
**Chart 3. Percentage of people waiting less than 18 weeks, NHS Scotland<sup>1,2</sup>, July - December 2014**



Notes

1. Scotland level adjusted information includes unadjusted waits for NHS Boards where adjusted waits are not available.
2. For details of adjustments see Table 5.

**Chart 4. Percentage of people waiting less than 18 weeks by NHS Board, 31 December 2014**



Notes

1. NHS Orkney, NHS Shetland and NHS Western Isles are combined to prevent disclosive numbers.
2. For details of adjustments see Table 5.

Information on data quality and data completeness at NHS Board level is available on pages 23-31.

**Table 5. Waiting times (with adjustments) for people waiting at 31 December 2014 by NHS Board**

While NHS Boards are developing their systems to improve the completeness and consistency of these data, NHS Board figures may not be directly comparable.

NHS Board of treatment	Total People Waiting	Waiting less than 18 weeks (Number)	Waiting less than 18 weeks (%)	Waiting time adjustments <sup>1</sup>
<b>NHS Scotland<sup>2</sup></b>	16,381	12,964	79.1	..
NHS Ayrshire & Arran	2,574	2,075	80.6	NA
NHS Borders	319	244	76.5	NA, U, RO
NHS Dumfries & Galloway	762	631	82.8	Unadjusted
NHS Fife	2,349	1,452	61.8	Unadjusted
NHS Forth Valley	1,084	921	85.0	NA, U
NHS Grampian	1,020	842	82.5	Unadjusted
NHS Greater Glasgow & Clyde	1,892	1,790	94.6	NA
NHS Highland	834	680	81.5	NA,U, RO
NHS Lanarkshire	1,316	1,277	97.0	NA,U, RO
NHS Lothian	3,113	1,969	63.3	NA
NHS Tayside	1,024	1,015	99.1	NA, U, RO
NHS island boards <sup>3</sup>	94	68	72.3	..

## Notes

.. Data not available

## 1. Waiting time adjustments:

NA: Non Attendance. Waiting time may be reset if a person misses or rearranges an appointment.

U: Unavailability. Time a person is unavailable may be subtracted from the waiting time.

RO: Refuses Reasonable Offer. Waiting time may be reset if a person declines 2 or more dates.

For further information see page 4.

## 2. Scotland level data include unadjusted waits for NHS Boards where adjusted waits are not available.

## 3. NHS Orkney, NHS Shetland and NHS Western Isles are combined to prevent disclosive numbers.

Further information by NHS Board can be found [here](#).

Information on data quality and data completeness at NHS Board level is available on pages 23-31.

**Table 6. Unadjusted waiting times for people waiting at 31 December 2014 by NHS Board**

While NHS Boards are developing their systems to improve the completeness and consistency of these data, NHS Board figures may not be directly comparable.

NHS Board of treatment	Total People Waiting	Waiting less than 18 weeks (Number)	Waiting less than 18 weeks (%)
<b>NHS Scotland</b>	16,381	12,512	76.4
NHS Ayrshire & Arran	2,574	2,026	78.7
NHS Borders	319	232	72.7
NHS Dumfries & Galloway	762	631	82.8
NHS Fife	2,349	1,452	61.8
NHS Forth Valley	1,084	887	81.8
NHS Grampian	1,020	842	82.5
NHS Greater Glasgow & Clyde	1,892	1,625	85.9
NHS Highland	834	671	80.5
NHS Lanarkshire	1,316	1,230	93.5
NHS Lothian	3,113	1,851	59.5
NHS Tayside	1,024	1,010	98.6
NHS island boards <sup>1</sup>	94	55	58.5

Notes

.. Data not available

1. NHS Orkney, NHS Shetland and NHS Western Isles are combined to prevent disclosure numbers.

Further information by NHS Board can be found [here](#).

Information on data quality and data completeness at NHS Board level is available on pages 23-31.

## **Number of people referred for psychological therapies**

This section has information on how many people are referred for psychological therapies. Waiting lists can build up where demand for services exceeds the capacity of that service, so the number of referrals is a key measure for managing waiting times. This information is still at an early stage of development.

There are considerable variations in service structures across NHS Boards, and therefore a number of different referral pathways for people seeking to access psychological therapies.

In some areas referrals are made directly into discrete psychological therapies services, and it is relatively straightforward for Boards to report the numbers of referrals for psychological therapy, the date of receipt of referral and the date of commencement of treatment.

In other areas, however, there are no discrete Psychological Therapies services and Psychological Therapy is delivered, by appropriately trained staff, from within more generic Mental Health teams. These teams generally have a single point for receipt of referrals, and a subsequent process for allocation to a psychological therapist. In this case the date of receipt of referral is the date the referral is received by the Mental Health Team. These teams will require a process by which to identify those patients referred on for a Psychological Therapy and to record the commencement of therapy.

While NHS Boards are developing their systems, Board figures may not be directly comparable. Information on what referrals have been reported for each Board is detailed in the data quality section on pages 21-28.

The number of referrals by NHS Board are shown in Table 7.

**Table 7. Referrals for psychological therapies<sup>1</sup> by NHS Board, October to December 2014**

While NHS Boards are developing their systems to improve the completeness and consistency of these data, NHS Board figures may not be directly comparable.

NHS Board	All referrals		Referrals excluding rejected referrals <sup>4</sup>	
	Number of referrals	Referrals per 1,000 people	Number of referrals	Referrals per 1,000 people
<b>NHS Scotland</b> <sup>1,2,3,4,5</sup>	32,480	6.5	30,672	6.1
NHS Ayrshire & Arran <sup>2</sup>	3,938	10.6	3,173	8.5
NHS Borders	210	1.8	206	1.8
NHS Dumfries & Galloway	889	5.9	860	5.7
NHS Fife	1,537	4.2	1,448	3.9
NHS Forth Valley	883	2.9	819	2.7
NHS Grampian <sup>4</sup>	1,025	1.8	1,025	1.8
NHS Greater Glasgow & Clyde <sup>3,4</sup>	17,787	15.6	17,787	15.6
NHS Highland <sup>5</sup>	..	..	..	..
NHS Lanarkshire	1,865	2.9	1,588	2.4
NHS Lothian	3,049	3.6	2,753	3.2
NHS Orkney	16	0.7	16	0.7
NHS Shetland	36	1.6	36	1.6
NHS Tayside	1,228	3.0	944	2.3
NHS Western Isles	17	0.6	17	0.6

## Notes

.. Data not available

1. As explained in page 12 some Boards are unable to separate out referrals to psychological therapies from all mental health referrals.
2. NHS Ayrshire & Arran currently provide all referrals to MH but are working on separating out referrals to psychological therapies.
3. NHS Greater Glasgow & Clyde are unable to separate out referrals to psychological therapies only due to the structure of their MH departments. This is explained further in the data quality section on page 27.
4. NHS Grampian and NHS Greater Glasgow & Clyde are currently unable to provide the number of referrals rejected. Therefore this number will be over estimated.
5. NHS Highland are currently unable to provide any referral data.

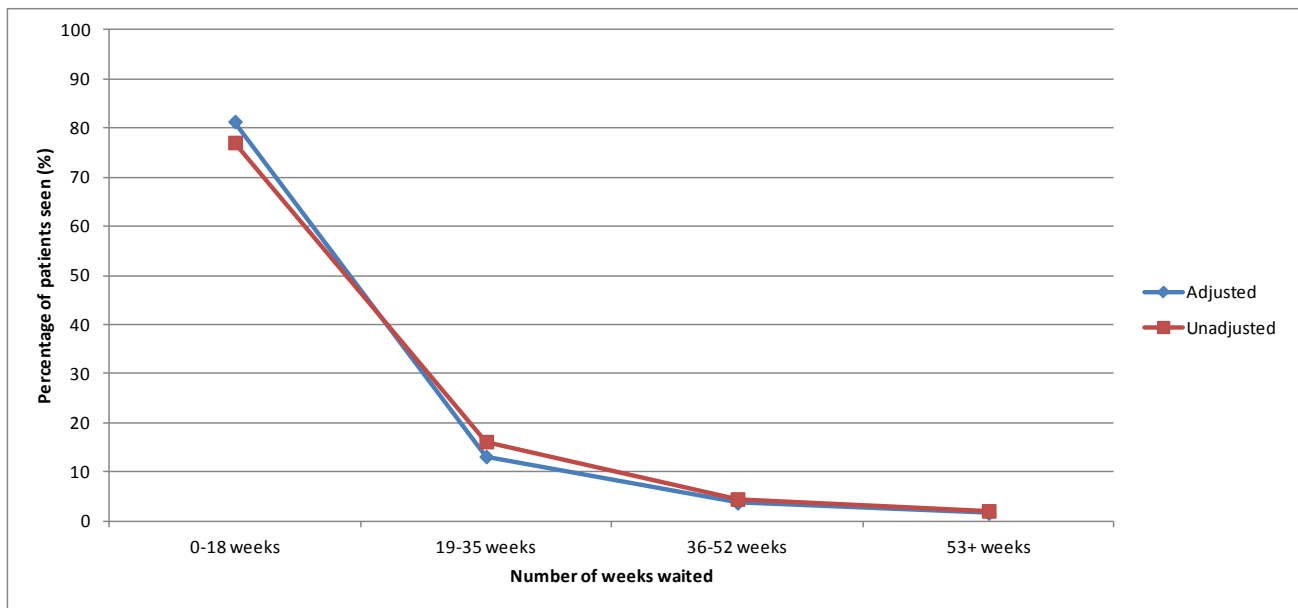
Further information on referrals for the last 2 quarters can be found [here](#).

Information on data quality and data completeness at NHS Board level is available on pages 23-31.

## Distribution of wait

Chart 5 and Table 8 presents distribution information for patients who started their treatment during the quarter October to December 2014. Chart 5 incorporates both adjusted and unadjusted data and shows the percentage of patients in relation to the number of weeks waited for treatment. Table 8 is adjusted data and shows the percentage of patients in wait time band by NHS Board.

**Chart 5. NHS Scotland <sup>1,2</sup>: Distribution of completed waits (adjusted<sup>2</sup> and unadjusted) during the quarter October - December 2014.**



### Notes

1. Scotland level adjusted information includes unadjusted waits for NHS Boards where adjusted waits are not available.
2. For details of adjustments see Table 5.

**Table 8. Distribution of wait (adjusted<sup>1</sup>) for people who started their treatment in October-December 2014, by NHS Board**

While NHS Boards are developing their systems to improve the completeness and consistency of these data, NHS Board figures may not be directly comparable.

NHS Board	Wait time band (adjusted wait)			
	0-18 weeks (%)	19-35 weeks (%)	36-52 weeks (%)	53+ weeks (%)
<b>NHS Scotland<sup>1</sup></b>	81.4	13.2	3.8	1.7
NHS Ayrshire & Arran	87.5	8.9	3.0	0.6
NHS Borders	48.1	41.7	9.4	0.8
NHS Dumfries & Galloway	69.5	22.3	7.4	0.8
NHS Fife	56.6	15.7	16.7	10.9
NHS Forth Valley	58.3	36.9	4.4	0.5
NHS Grampian	53.0	40.5	5.4	1.1
NHS Greater Glasgow & Clyde	95.1	4.7	0.1	-
NHS Highland	91.6	8.4	-	-
NHS Lanarkshire	90.9	9.1	-	-
NHS Lothian	37.1	35.3	15.9	11.6
NHS Tayside	97.4	2.5	0.1	-
NHS Island boards <sup>2</sup>	77.4	19.4	1.6	1.6

Notes

.. Data not available

'-' denotes zero

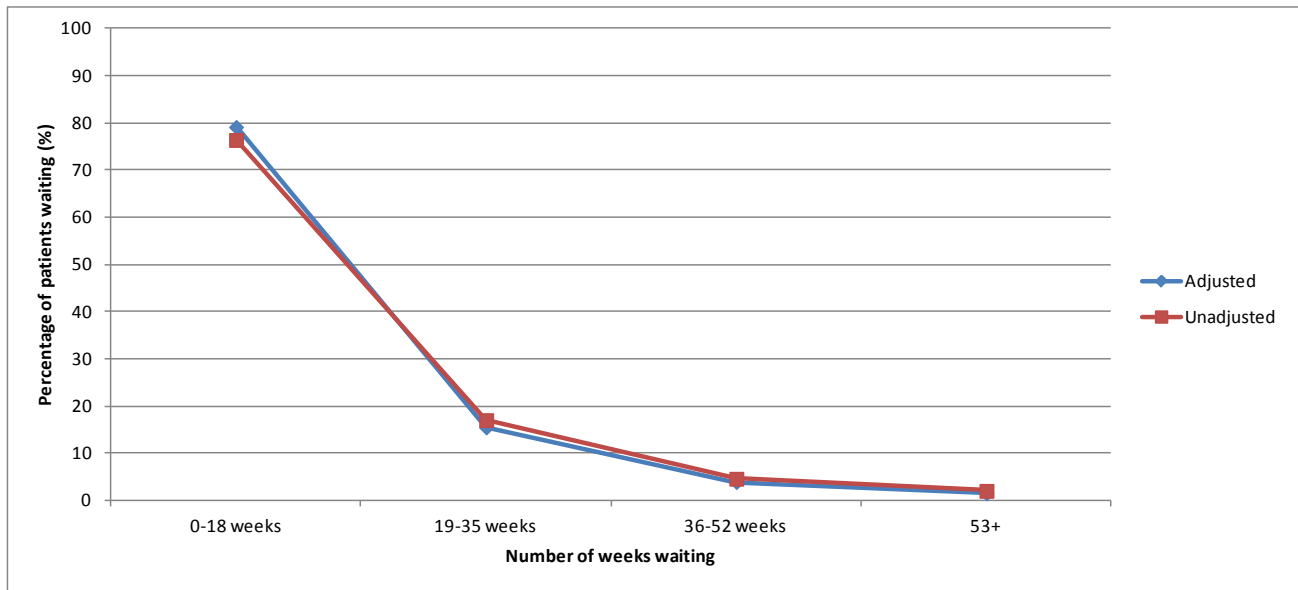
1. Scotland level data include unadjusted waits for NHS Boards where adjusted waits are not available.
2. NHS Orkney, NHS Shetland and NHS Western Isles are combined to prevent disclosive numbers.

Further information on the distribution of wait can be found [here](#).



Chart 6 and Table 9 presents distribution information for patients who are waiting to start their treatment as at the end of December 2014. Chart 6 incorporates both adjusted and unadjusted data and shows the percentage of patients in relation to the number of weeks they have been waiting for treatment. Table 9 is adjusted data and shows the percentage of patients in wait time band by NHS Board.

**Chart 6. NHS Scotland<sup>1</sup> : Distribution of patients waiting for treatment (adjusted<sup>2</sup> and unadjusted) as at 31 December 2014.**



**Notes**

1. Scotland level adjusted information includes unadjusted waits for NHS Boards where adjusted waits are not available.
2. For details of adjustments see Table 5.

**Table 9. Distribution of wait (adjusted<sup>1</sup>) for people waiting at 31 December 2014, by NHS Board**

While NHS Boards are developing their systems to improve the completeness and consistency of these data, NHS Board figures may not be directly comparable.

NHS Board	Wait time band (adjusted wait)			
	0-18 weeks (%)	19-35 weeks (%)	36-52 weeks (%)	53+ weeks (%)
<b>NHS Scotland<sup>1</sup></b>	79.1	15.5	3.9	1.5
NHS Ayrshire & Arran	80.6	14.8	3.4	1.2
NHS Borders	76.5	20.7	2.5	0.3
NHS Dumfries & Galloway	82.8	15.2	1.8	0.1
NHS Fife	61.8	24.0	9.8	4.4
NHS Forth Valley	85.0	14.3	0.7	-
NHS Grampian	82.5	12.5	4.5	0.5
NHS Greater Glasgow & Clyde	94.6	4.8	0.6	-
NHS Highland	81.5	16.1	2.0	0.4
NHS Lanarkshire	97.0	3.0	-	-
NHS Lothian	63.3	27.0	6.6	3.1
NHS Tayside	99.1	0.6	0.2	0.1
NHS Island boards <sup>2</sup>	72.3	18.1	6.4	3.2

Notes

.. Data not available

'-' denotes zero

1. Scotland level data include unadjusted waits for NHS Boards where adjusted waits are not available.
2. NHS Orkney, NHS Shetland and NHS Western Isles are combined to prevent disclosive numbers.

Further information on the distribution of wait can be found [here](#).

## Glossary

### **Psychological Therapies**

Psychological therapies refer to a range of interventions, based on psychological concepts and theory, which are designed to help people understand and make changes to their thinking, behaviour and relationships in order to relieve distress and to improve functioning. The target applies specifically to psychological therapies for treatment of a mental illness or disorder.

### **Start of treatment**

This is when treatment starts or the person is removed from the waiting list. Not all people who are referred for psychological therapies go on to have treatment. Some people attend an assessment appointment, need no further treatment, and so are removed from the waiting list. Some people are offered treatment, but decide not to go ahead.

### **Adjusted waiting time**

This is how long a person waited after taking into account any periods they were unavailable and any appointments that they missed or rearranged. The adjustments are described on Page 22. If a person has no periods of unavailability and attends on the first date that they accept, then no adjustments are made and their adjusted waiting time is the same as their unadjusted waiting time.

### **Unadjusted waiting time**

The total time from the date the referral was received by the service to the date treatment commenced.

### **Median**

This is the time period (number of weeks) that half of the patients seen started treatment within.

### **90<sup>th</sup> Percentile**

This is the time period (number of weeks) that 90% of the patients seen started treatment within.

### **HEAT targets**

A set of targets agreed between the Scottish Government and NHS Scotland relating to Health Improvement, Efficiency, Access or Treatment (HEAT).

## List of Tables

Table No.	Name	Time period	File & size
1	<a href="#">Adjusted Completed waits for people seen</a>	July 2014 - Dec 2014	Excel [367kb]
2	<a href="#">Unadjusted Completed waits for people seen</a>	July 2014 - Dec 2014	Excel [321kb]
3	<a href="#">Adjusted Waiting times for people waiting</a>	July 2014 - Dec 2014	Excel [366kb]
4	<a href="#">Unadjusted waiting times for people waiting</a>	July 2014 - Dec 2014	Excel [321kb]
5	<a href="#">Adjusted Completed waits patient distribution</a>	July 2014 - Dec 2014	Excel [379kb]
6	<a href="#">Unadjusted waiting times patient distribution</a>	July 2014 - Dec 2014	Excel [337kb]
7	<a href="#">Referrals</a>	July 2014 - Dec 2014	Excel [358kb]

Note: in order to view the tables to full effect, your macro security settings will need to be set to medium. To change macro security settings use Tools, Macro, Security - set security level to Medium and re-open the report.

## Contact

### **Mhairi Boyd**

Senior Information Analyst

[mhairi.boyd@nhs.net](mailto:mhairi.boyd@nhs.net)

[0131 275 6079](tel:01312756079)

### **Amy McKeon**

Principal Information Analyst

[amy.mckeon@nhs.net](mailto:amy.mckeon@nhs.net)

0131 275 6559

### **Psychological Therapies Waiting Times Team**

[NSS.isdpsychtherapies@nhs.net](mailto:NSS.isdpsychtherapies@nhs.net)

## Further Information

Further information can be found on the [ISD website](#)

## Rate this publication

Please [provide feedback](#) on this publication to help us improve our services.

## Appendix

### A1 – Background Information

#### Data collection

When the Psychological Therapies data collection was first set up, the IT systems across NHS Boards were not set up to collect the data at patient level. Therefore, it was agreed to collect aggregate level data. NHS Boards submit aggregate level data to ISD in an Excel template. The template has evolved over time. The current template is set up to collect information on patients who waited during the month and information on patients waiting at the end of each month. This information (number of people) is collected in weekly time bands to allow calculation of the median and 90<sup>th</sup> percentile. A separate Excel sheet is set up for adjusted and unadjusted waits.

#### Why are waiting times important?

The Scottish Government is committed to delivering faster access to psychological therapies for those with mental illness or disorder. Patients and clinicians have identified access to therapies as a key service improvement to better meet their needs and expectations. Psychological therapies have an important role in helping people with mental health problems, who should have access to effective treatment, both physical and psychological. It is generally accepted that these therapies can have demonstrable benefit in reducing distress, symptoms, risk of harm to self or others, health related quality of life and return to work. The Scottish Government recognises that delivering faster access is a significant and complex challenge, and sees the target as an opportunity to drive local service redesign informed by evidence.

#### Mental Health Policy and Targets

The Mental Health Strategy is set within the context of the NHS Scotland Quality Strategy <http://www.scotland.gov.uk/Publications/2010/05/10102307/0> which sets out three quality ambitions that care must be person-centred, safe and effective.

Developments in mental health care have been driven by a series of reports and policy recommendations:

In April 2011, a [HEAT target](#) for Psychological Therapies was introduced. The target is that no person will wait longer than 18 weeks from referral to treatment for Psychological Therapies from December 2014. Following the conclusion of previously planned work on a tolerance level for Psychological Therapies waiting times and engagement with NHS Boards and other stakeholders, the Scottish Government has determined that the Psychological Therapies target should be delivered for at least 90% of patients.

In August 2012, the [Mental Health Strategy for Scotland: 2012-2015](#) was produced. This document sets the policy direction for the next four years and includes a commitment to achieving and maintaining waiting times targets.

In November 2012, the Scottish Government issued the [Summary Report on the Application of NHSScotland Waiting Times Guidance](#).

### **Child & Adolescent Mental Health (CAMH) Services Waiting Times**

Waiting times for [CAMH Services](#) are also published this quarter.

### **Workforce Information**

The [Psychology Workforce Planning Project](#) was initiated in 2001 and is a collaboration between NHS Education for Scotland (NES) and ISD.

## A2 – Data Quality

Psychological therapies waiting times data have been collected nationally since April 2011, although initially data were very incomplete and of poor quality. There have been significant improvements in data quality and completeness over time, but some systems for collecting data locally are still at an early stage of development, and as a result, the data are not yet complete. Over the coming months, we expect the quality and completeness of data to continue to improve.

This section provides information on the quality and completeness of data supplied by NHS Boards to ISD. As part of the quality assurance process for this publication ISD has asked Boards to provide information on any data quality and completeness issues that may affect interpretation of the statistics. ISD will routinely ask NHS Boards for updates on these issues and this information will be used to determine if the data remain as developmental.

ISD also routinely seeks clarification from NHS Boards amongst other things where there may be large changes in numbers, unusual patterns in the data or changes in trends. These changes may be influenced by a variety of factors including service changes/reconfiguration or data recording changes.

### Adjustment of waiting times

Waiting times for most NHS services are worked out using a calculation that takes into account any periods a person is unavailable and missed or cancelled appointments. These are referred to as adjustments. Some NHS Boards are not able to make all the appropriate adjustments to waiting times for psychological therapies so we have included information on what adjustments each NHS Board has made.

Waiting time adjustments allow fair reporting of waiting times which have been affected by factors outside the NHS Board's control. However, the timing of appointments is always based on clinical need. For psychological therapies services, resetting the waiting time to zero is done for reporting purposes only and does not impact on the timing of any further appointments.

The main adjustments that are made to psychological therapies waiting times are:

- If a person is unavailable (for example on holiday), the period for which they are unavailable is subtracted from their total waiting time.
- If a person does not attend an appointment and has to be given another, their waiting time is reset to zero.
- If a person rearranges an appointment, their waiting time is reset to zero on the day they contact the service to rearrange their appointment.
- If a person is offered several appointments and declines them all, their waiting time is reset to zero. NHS Boards report that this happens very rarely as most appointments are agreed by telephone.



This report also shows unadjusted waiting times. These are the actual times people have waited. The Scottish Government have agreed that the HEAT target will be measured using adjusted waiting times. Where NHS Boards are still developing systems to adjust waiting times for psychological therapies, their unadjusted waits have been used to estimate the Scotland figure.

The [Summary Report on the Application of NHS Scotland Waiting Times Guidance](#) provides more explanation on the main adjustments that are made to psychological therapies waiting times.

### **Adjusted and unadjusted waiting times**

It is not possible to report nationally consistent data at Scotland level due to the differences in adjustments made to waiting times across the NHS Boards.

When the HEAT target was announced, NHS Boards were asked to adjust waiting times where patients were unavailable or did not attend an appointment and had to be given another. This calculation of wait is used in other NHS services such as inpatients, outpatients and audiology.

Some NHS Boards developed systems to enable this calculation for psychological therapies. However, not all systems are able to make all the appropriate adjustments, so all data which includes adjusted figures also includes information about what adjustments have been applied.

NHS Boards are also asked to provide unadjusted waiting times. These are the actual times people have waited. All NHS Boards providing data are able to provide unadjusted waiting times.

### **Referral to treatment calculation**

Some NHS Boards are not able to calculate the waiting times from referral to treatment yet. While systems are being developed to do this, they are using a proxy for treatment. The [Guidance and Scenarios HEAT target](#) document advises Boards should use the second appointment as a proxy for treatment. Where Boards are still using assessment / first appointment as proxy for treatment their waiting times could increase once they are able to calculate referral to treatment. Information on which NHS Boards are still developing their systems for this is detailed in the NHS Board level data quality issues.

### **CAMH Services for Psychological Therapies**

Referrals for Psychological Therapies from CAMHS services are included as part of this target as well as being included with the CAMHS target. Not all Boards are including this information in their Psychological Therapies data yet. Information on this by Board is included in the data quality section.

### **Data completeness: common issues**

Waiting times data are extracted from local administration systems which are updated frequently with information about appointments, attendances, etc. This may lead to different reported numbers of patients seen or waiting depending on the date the data were extracted. However, any differences equate to a relatively small proportion of total numbers of patients seen or waiting.

### **Data completeness**

While NHS Boards are developing their systems to report information on Psychological Therapies, some NHS Boards are not able to provide information for all services. Information on which services NHS Boards are not able to report on and an estimate of the percentage completeness is detailed in the NHS Board level data quality issues below if NHS Boards have provided ISD with this information during the quality assurance stage.

## Data quality issues by NHS Board

This section details specific data quality issues for each NHS Board and provides completeness estimates where there is data missing due to systems still being developed.

### NHS Ayrshire & Arran

Data is estimated to be 98% complete, there are 4 services still to be incorporated into the return; Elderly Mental Health, Forensics, Addictions and Inpatients. The Board expects the level of activity to be minimal and patients under the care of these services are currently seen within 18 weeks. Elderly Mental Health will be included in the January 2015 Return.

NHS Ayrshire & Arran have developed a purpose built database for capturing and recording of all RTT Patient Contact within Adult Mental Health Services including defined Psychological Therapies both Matrix and non-Matrix. Following a successful pilot, the databases have been rolled out in a phased programme. The final services (as stated above) will be incorporated early 2015.

The database clearly identifies Assessment and 1st Treatment. If treatment started at the Assessment, this is a clinical decision and is recorded as such in the database upon the Clinicians instruction.

CAMHS data is included for referrals for a Psychological Therapy.

The Board are currently reporting all referrals to the Mental Health service. Work is underway to ensure that by the end of March 2015 the Board will be able to extract identified Psychological Therapy activity.

### NHS Borders

The Board estimate the data to be 100% complete.

At present, the Board have to rely on manual inputting to Excel sheets as their IT system is not fully fit for purpose. As they refine their standalone spreadsheet system for the reporting, they have been experiencing some snags – which are being fixed as they go–this may produce apparent anomalies month on month – but the direction of travel is increased accuracy.

CAMHS data is included for referrals for a Psychological Therapy.

The Board reports figures for referrals to Psychological Therapies only.

### NHS Dumfries & Galloway

The Board estimate the data to be approximately 97% complete.

Currently, the Board supply unadjusted data only. There is no current timescale for the submission of adjusted data due to development/decision of new IT system.

From April 2014, the Board are using a proxy which will be 2 weeks after the 1<sup>st</sup> appointment (which is the normal for 2<sup>nd</sup> appointments for this Board) for all services except the self help team which will remain at 1<sup>st</sup> appointment being the start of treatment which is the norm for that service in NHS Dumfries & Galloway.

Currently, data for CAMH services and Child Psychology are recorded on different systems; CAMH services is in Topas and Child Psychology in an Access-based patient management system. The CAMH services data are adjusted and the Child Psychology are

unadjusted. The two sets of data are also measured differently. For Child Psychology a proxy of second appointment is used to measure treatment. Therefore, at present, only information for Child Psychology is included in this publication. The Board are working to make the two sets of data consistent so that Child Psychology and the psychological therapies part of CAMH services can be combined in future.

Each service is recording data in a different way which makes it difficult to collate data into one return.

The Board report on referrals to Psychology Services only.

### **NHS Fife**

The Board estimate the data to be approximately 90% complete.

From the August 2014 data the Board are measuring referral to treatment, prior to this they reported to 1<sup>st</sup> appointment as a proxy for treatment. The Board advise us that this change in data recording accounts for the apparent increase in waits and the reduction in patients completing waits from August 2014.

The reported data includes Psychology, Occupational Therapy and CAMH Services.

The Board are unable to provide adjusted waits at present, as this relies on an improved IT system. There are developments working towards this but testing has not yet commenced to see if adjustment will be possible.

From October 2014 CAMHS Psychological Therapy activity is included.

The Board report on referrals to the Psychology Service only.

### **NHS Forth Valley**

The Board believe that the majority of psychological therapies provision is within the 3 services they report on. Currently they do not report on interventions delivered by the Dialectical Behaviour Therapy (DBT) service, the Behavioural Family Therapy (BFT) service or Cognitive Behavioural Therapy (CBT) delivered by nursing staff who work outwith the 3 main psychological therapy services. Although psychological interventions delivered to children and young people are counted towards the CAMHS access target, they are not yet reported as part of the psychological therapies target. Although some referrals to Old Age Psychology are included, it has recently becomes apparent that not all of them are. This is currently being addressed. Unfortunately, as NHS Forth Valley is in the process of migrating from PiMS to TOPAS, they are unable to significantly progress these data collection improvements until the migration is complete. It is nevertheless hoped to be able to complete this work in the coming months.

They are working to improve their data collection and are piloting a reporting process with the BFT service which, after evaluation, will be rolled out to the DBT service and CBT practitioners. With regards to CAMHS they are working to identify ways to extract this and report it with the other PTs data to provide a more comprehensive and accurate picture of total activity.

All 3 specialties reported on measure Referral to Treatment.

The Board reports figures for referrals to Psychological Therapies only.

## **NHS Grampian**

The Board supply unadjusted data only. Their current standalone system cannot record adjusted figures and they hope to migrate to TRAK in June 2015.

All services are included so they have 100% of areas reporting, however, within that there are known data quality issues that they are actively working to resolve.

The Board are unable to submit the number of rejected referrals.

The Board are unable to submit only CAMHS Psychological Therapy activity so include all CAMHS activity.

From August 2014, the Board reports figures for referrals to Psychological Therapies, prior to this they reported referrals to all Mental Health Services.

## **NHS Greater Glasgow & Clyde**

The Board estimate the data to be 95% complete. There are a small number of teams that are not included in the return, but the Board do not believe they will make a huge difference to the figures already reported.

As services are redesigned and the delivery of psychological therapies is within their remit, then these services are 'new' and are reported on within 2/3 months of implementation.

From November 2014 CAMHS Psychological Therapy activity is included.

The Board are unable to submit the number of rejected referrals.

The Board report a combination of 1) referrals for Psychological Therapies alone and 2) all referrals to the mental health service depending on the reporting service.

NHS Greater Glasgow & Clyde (NHS GG&C) does not have discrete psychological therapy departments, but provides psychological therapies for the treatment of a mental illness or disorder as part of locality based Primary Care Mental Health teams, Community Mental Health teams and Specialist Mental Health teams. Therapies are delivered by Clinical Psychologists, Nurses, CBT Therapists and Occupational Therapists and Psychotherapists, working within those teams, who are trained and supervised to deliver a range of psychological therapies listed in the Matrix.

In NHS GG&C, the waiting time for access to psychological therapies, for newly referred patients, is counted from the date that the referral is received by the team (including self referrals to Primary Care Mental Health teams).

The waiting time for clients of non mental health services who have a need for a psychological therapy for treatment of a mental disorder identified, begins once the client is referred for therapy to the appropriate clinician within that team or to another team with a psychological therapy resource.

## **NHS Highland**

Data are not available from March 2014 until October 2014 due to the Board migrating to a new patient management system.

Patients seen (completed waits) - approximately 70% of this activity cannot be reported due to delays in getting the required extract from PMS. This means that the published figures represent only approximately 30% of patients seen.

Adjustments and clock resets for the patient being unavailable / not attending are only made up 18 weeks. Approximately 84% of patients on the waiting list (patients not yet

seen) have their waiting times recorded on a system which allows for adjustment. The system does not allow for further adjustment beyond 18 weeks if the breach date has been exceeded. The remaining 16% of patients on the waiting list (patients not yet seen) have not had their waiting times adjusted in any way.

First appointment is currently used as proxy for treatment in Psychological Services (Northern NHH), and all Argyll & Bute Psychological Services except Guided Self Help. 84% of patients on the waiting list in November 2014 will have their first appt used as a proxy for treatment. The following services report referral to treatment: CBT Northwest and Lochaber, Guided Self Help, Eating Disorders, PTSD.

The Board are currently unable to submit figures for referrals.

Recording of clinic attendances has improved over the last 3 months or so, with less than 4% of clinic attendances in November 2014 remaining unrecorded to date. The Board are working on improving completeness of clinic outcome coding in PMS which will enable them to measure referral to treatment accurately once the completed waits extract becomes available.

### **NHS Lanarkshire**

The Board estimate the data to be approximately 95% complete (this is not including CAMHS data, which they intend to include from January 2015).

All services have migrated to Trakcare. Data quality issues have declined significantly over the past quarter, and the Board are reassured that the data reported is accurate. From January, the submission will be based on data extracted from TrakCare.

The Board include only referrals that are waiting for a Psychological Therapy. Some referrals are made to pain management services, stroke services, traumatic brain injury services, and domestic abuse services that may be for assessment, but which may end up with a psychological therapy being delivered. Currently, we do not yet collate this data. It is estimated that this will involve less than 5% of the total referrals. It is anticipated that these small, single therapist, services will commence data reporting in 2015.

Adjustments, up to 18 weeks, have been in place for Psychological Therapies on TrakCare since May 2014.

### **NHS Lothian**

Due to migration to a new patient management system the Board were unable to submit data for June & July 2014. Clinical Health Psychology Services and Older Adult Behavioural Services for Behaviour that Challenges in Edinburgh, East and Midlothian have not been included to date. The Board continue to progress the work required to allow them to report this data.

Guided self help delivered by 3rd sector organisations governed by Service Level Agreements have not been included to date. They have included limited data from the 2 services providing GSH in this way.

Therapies delivered within an inpatient mental health setting have not been included to date. The Board will be scoping out the work required to collect this data as part of the second phase of implementing the use of TRAK in mental health services. Submission is not likely to be possible until March 2015.

The Board hope to include CAMHS Psychological Therapy activity from February 2015.

The Board are applying adjustments for up to 12 weeks against each stage of the pathway. So, for those awaiting assessment adjustments are not applied after a 12 week wait and for those on the treatment stage adjustments are not applied after a 12 weeks wait. This is an interim arrangement and will change.

### **NHS Orkney**

The Board have submitted 100 percent of the PT data for the last quarter, Oct-Dec 2014.

The Board does not currently submit adjusted waiting times information. At present, the data is gathered using Excel databases and then collated for the current return to ISD.

The Board does not include CAMHS Psychological Therapies in the return.

The Board records referral to treatment.

The Board includes all referrals waiting for a Psychological Therapy.

### **NHS Shetland**

The Board estimate the data is 100% complete (with the exception of very small CAMHS numbers).

### **NHS Tayside**

The Board estimate the data to be approximately 100% complete.

The Board use the first appointment to measure start of treatment. The Board have advised that, for the majority of patients, treatment will commence at the first appointment, therefore this is not being used as a proxy. The instances where only an assessment may have occurred at first appointment would account for approximately 10% of recent activity, for these cases first appointment is used as a proxy for first treatment.

CAMHS Psychological Therapy activity is included.

The Board include referrals to Psychological Therapies only.

### **NHS Western Isles**

The Board estimate the data to be approximately 100% complete.

Adjustments are applied to the data up to time of treatment.

The Board are unable to submit only CAMHS Psychological Therapy activity so include all CAMHS activity.

For most services provided by NHS Western Isles, referrals are electronic through their Referral Management System and are allocated directly to a clinician. The first appointment from this is classed as first treatment, there is no assessment stage, treatment will always start at the first appointment, and this is not being used as a proxy.

The Board include referrals to Psychological Therapies only.

### Psychological Therapies Data Completeness – July-December 2014

The completeness of the data submitted for each NHS Board is summarised in the table below:

NHS Board		Jul-14	Aug-14	Sep-14	Oct-14	Nov-14	Dec-14
NHS Ayrshire & Arran	Adjusted						
	Unadjusted						
NHS Borders	Adjusted						
	Unadjusted						
NHS Dumfries & Galloway	Adjusted						
	Unadjusted						
NHS Fife	Adjusted						
	Unadjusted						
NHS Forth Valley	Adjusted						
	Unadjusted						
NHS Grampian	Adjusted						
	Unadjusted						
NHS Greater Glasgow & Clyde	Adjusted						
	Unadjusted						
NHS Highland	Adjusted						
	Unadjusted						
NHS Lanarkshire	Adjusted						
	Unadjusted						
NHS Lothian	Adjusted						
	Unadjusted						
NHS Orkney	Adjusted						
	Unadjusted						
NHS Shetland	Adjusted						
	Unadjusted						
NHS Tayside	Adjusted						
	Unadjusted						
NHS Western Isles	Adjusted						
	Unadjusted						

**Key**

	No Data Submitted
	Partial Data Submitted
	All Data Submitted



### A3 – Publication Metadata (including revisions details)

Metadata Indicator	Description
Publication title	Psychological Therapies Waiting Times in Scotland <a href="http://www.isdscotland.org/Health-Topics/Waiting-Times/Psychological-Therapies/">http://www.isdscotland.org/Health-Topics/Waiting-Times/Psychological-Therapies/</a>
Description	Monthly and quarterly summary of waiting times and waiting lists for Psychological Therapies
Theme	Health and Social Care
Topic	Access and Waiting Times
Format	Excel workbooks
Data source(s)	Aggregate counts accredited and derived from individual NHS Scotland Boards are submitted monthly to ISD using a defined Excel template.
Date that data are acquired	Deadline for data submission is the 24th of each month, though files can be resubmitted up to 3 weeks before publication where the quality assurance process identifies differences with local figures.
Release date	The last Tuesday of the month for each publication
Frequency	Quarterly
Timeframe of data and timeliness	Data from October to December 2014, with figures from July to September 2014 for reference.
Continuity of data	Information has been collected nationally since April 2011 with a revised dataset introduced in April 2013. Monthly information is included in the report for the last six months.
Revisions statement	Previously published waiting times are revised at each publication to reflect the latest available data submitted to ISD by the NHS Boards.
Revisions relevant to this publication	Revisions to the previous publication were received from NHS Borders, NHS Grampian and NHS Shetland.  Patients Seen:  The NHS Scotland total has increased from 10,108 to 10,304 (NHS Borders (+7), NHS Grampian (+188) and NHS Shetland (+1)), the percentage of patients seen within 18 weeks has decreased from 81.3% to 81.1%.  Patients Waiting:  The NHS Scotland total has increased from 14,445 to 14,463 (NHS Borders (+6), NHS Grampian (+11) and NHS Shetland (+1)). The percentage of patients waiting 18 weeks or less has remained the same.

	<p>Referrals:</p> <p>NHS Dumfries &amp; Galloway resubmitted referrals data for September. July-Sep all referrals figure increased from 592 to 913.</p> <p>NHS Grampian resubmitted referrals data for July-Sep. July-Sep all referrals figure decreased from 1,174 to 875.</p>
Concepts and definitions	Definitions not contained in this report are available <a href="#">here</a> .
Relevance and key uses of the statistics	<p>Waiting times are important to patients and are a measure of how the NHS is responding to demands for services. Measuring and regular reporting of waiting times highlights where there are delays in the system and enables monitoring of the effectiveness of NHS performance throughout the country. The NHS in Scotland has been set a number of targets for maximum waiting times.</p> <p>Other uses of the data include information requests for a variety of customers, e.g. research charities; public companies; Freedom of Information requests; information support to Boards; health intelligence work; parliamentary questions and HEAT targets.</p>
Accuracy	<p>These data are classified as developmental.</p> <p>ISD only receives aggregate data from each NHS Board. Although aggregated data cannot be systematically validated by ISD, reported data are compared to previous figures and to expected trends. Derivation of the figures and data accuracy are matters for individual NHS Boards.</p>
Completeness	100% of submitted data are used for analysis and publication.
Comparability	<p>There will be differences in the measures used and collection methods of Psychological Therapies waiting times statistics, as well as differences in service structures between the administrations. Users need to carefully read the publications when making comparisons.</p> <p>Links to Psychological Therapies waiting time information can be found below:</p> <p>England: <a href="http://www.hscic.gov.uk/mentalhealth">http://www.hscic.gov.uk/mentalhealth</a></p> <p>Northern Ireland:</p> <p>They do have a Ministerial Target of 13 weeks for patients waiting. This information is not published and they do not have any referral to treatment data for Psychological Therapies.</p>

	<p>Wales</p> <p>They do not have a waiting times target for psychological therapies currently.</p>
Accessibility	It is the policy of ISD Scotland to make its web sites and products accessible according to <a href="#">published guidelines</a> .
Coherence and clarity	<p>Key statistics for the latest quarter are linked to on the main Waiting Times page <a href="http://www.isdscotland.org/Health-Topics/Waiting-Times/">www.isdscotland.org/Health-Topics/Waiting-Times/</a>.</p> <p>Statistics are presented within Excel spreadsheets. NHS Board and national figures are presented. Further features to aid clarity:</p> <ol style="list-style-type: none"> <li>1. Tables are printer friendly.</li> <li>2. Key data presented graphically.</li> </ol>
Value type and unit of measurement	Number and percentage of patients seen, number and percentage of patients waiting, median and 90 <sup>th</sup> percentile waits, number of patients referred, number of patients accepted (number referred minus number rejected) and referral rate per 1,000 population; by NHS Board.
Disclosure	The <a href="#">ISD protocol on Statistical Disclosure Protocol</a> is followed.
Official Statistics designation	Official Statistics
UK Statistics Authority Assessment	
Last published	25 November 2014
Next published	26 May 2015
Date of first publication	27 August 2013
Help email	NSS.isdPsychtherapies@nhs.net
Date form completed	12 February 2015

## **A4 – Early Access details (including Pre-Release Access)**

### **Pre-Release Access**

Under terms of the "Pre-Release Access to Official Statistics (Scotland) Order 2008", ISD are obliged to publish information on those receiving Pre-Release Access ("Pre-Release Access" refers to statistics in their final form prior to publication). The standard maximum Pre-Release Access is five working days. Shown below are details of those receiving standard Pre-Release Access.

### **Standard Pre-Release Access:**

- Scottish Government Health Department
- NHS Board Chief Executives
- NHS Board Communication leads

### **Early Access for Management Information**

These statistics will also have been made available to those who needed access to 'management information', ie as part of the delivery of health and care:

### **Early Access for Quality Assurance**

These statistics will also have been made available to those who needed access to help quality assure the publication:

## A5 – ISD and Official Statistics

### About ISD

Scotland has some of the best health service data in the world combining high quality, consistency, national coverage and the ability to link data to allow patient based analysis and follow up.

Information Services Division (ISD) is a business operating unit of NHS National Services Scotland and has been in existence for over 40 years. We are an essential support service to NHSScotland and the Scottish Government and others, responsive to the needs of NHSScotland as the delivery of health and social care evolves.

**Purpose:** To deliver effective national and specialist intelligence services to improve the health and wellbeing of people in Scotland.

**Mission:** Better Information, Better Decisions, Better Health

**Vision:** To be a valued partner in improving health and wellbeing in Scotland by providing a world class intelligence service.

### Official Statistics

Information Services Division (ISD) is the principal and authoritative source of statistics on health and care services in Scotland. ISD is designated by legislation as a producer of 'Official Statistics'. Our official statistics publications are produced to a high professional standard and comply with the Code of Practice for Official Statistics. The Code of Practice is produced and monitored by the UK Statistics Authority which is independent of Government. Under the Code of Practice, the format, content and timing of statistics publications are the responsibility of professional staff working within ISD.

ISD's statistical publications are currently classified as one of the following:

- National Statistics (ie assessed by the UK Statistics Authority as complying with the Code of Practice)
- National Statistics (ie legacy, still to be assessed by the UK Statistics Authority)
- Official Statistics (ie still to be assessed by the UK Statistics Authority)
- other (not Official Statistics)

Further information on ISD's statistics, including compliance with the Code of Practice for Official Statistics, and on the UK Statistics Authority, is available on the [ISD website](#).