

Publication Report



Psychology Services Workforce in NHSScotland

Workforce Information as at 31st March 2014

27th May 2014



Contents

Introduction	2
Key points	3
Results and Commentary	4
Staff in Post	4
Overall trends	4
Skill Mix	7
Additional Information	12
Scottish Prison Service Transfer	12
Maternity Leave	12
NHS Highland	12
Statements Provided by Heads of Psychology Service	13
Vacancy Information	15
Services to the Islands Boards as at 31st March 2014	16
Staff in training as at 31st March 2014.	16
Glossary	17
List of Tables	18
Contact	20
Further Information	20
Rate this publication	20
A1 – Background Information	21
Mental Health Policy and Targets	23
Links to Related Publications	23
A2 – Publication Metadata (including revisions details)	24
A3 – Early Access details (including Pre-Release Access).....	26
Head of NES Psychology Directorate	26
Workforce Steering Groups	26
Lead Clinicians Groups	26
A4 – ISD and Official Statistics	27

Introduction

This publication is a collaborative piece of work between the Information Services Division (ISD) of NHS National Services Scotland (NSS) and NHS Education for Scotland (NES).

The publication presents information on NHSScotland Psychology Services workforce as at 31st March 2014.

The data are sourced from the NES-ISD National Psychology Services Workforce Information Database.

Information presented are:

- Data on clinical staff in post in NHSScotland psychology services including: Clinical Psychologists, Other Applied Psychologists, graduates of the MSc in Psychological Therapies in Primary Care, graduates of the MSc in Applied Psychology of Children & Young People, Cognitive Behavioural Therapists, Counsellors, Other Therapists and Assistant Psychologists.
- Data on vacancies.
- Data on trainees.
- Data are available by target age of clients seen, area of work, NHS Board, and gender, age and contract type.

The information collected and presented are used by NES, the Scottish Government and NHS Boards to support local, regional and national workforce planning, and to support educational training and planning.

The tables present figures in both Headcount numbers and Whole Time Equivalents (wte). WTE adjust headcount staff figures to take account of part-time staff.

Within NHSScotland, recent years have seen an unparalleled demand for increased access to Applied Psychologists and Psychological Therapies. A demand from both patients and professionals has arisen due to the ever increasing evidence base for psychological interventions.

Contemporary Healthcare Policy recognises the importance of Psychological and Psychosocial factors for physical and mental health and well being across the life span. Government objectives for health improvement require change in what people (i.e. the public, service users and service providers), individually and collectively, think, feel and do about health and healthcare in Scotland. Psychology offers a scientific basis for understanding, and practical skills for influencing, how people think, feel and behave, with specific reference to physical health and mental well being. There is a strong evidence base, recognised in Scottish Intercollegiate Guidelines Network (SIGN) and National Institute for Health and Clinical Excellence (NICE) guidelines for the effectiveness of psychological interventions in delivering positive health change for a wide range of clinical conditions.

Further data tables are available on the [Psychology Services Workforce](#) pages of the ISD website.

Key points

The group 'Clinical Psychologists' is composed of staff whose professional group is Clinical Psychology. This is the largest staff group within NHSScotland Psychology Services.

'Other Applied Psychologists' comprises staff from professional groups Counselling Psychology, Health Psychology, Forensic Psychology and Neuropsychology.

'All Applied Psychologists' refers to the total of Clinical Psychologists plus Other Applied Psychologists.

As at 31st March 2014:

- There has been a significant increase over time in the number of Clinical and Other Applied Psychologists employed in NHSScotland from 426 (371wte) in 2003 to the current level of 852 (716.4wte) as at 31st March 2014.
- Whilst the wte of All Professional Groups employed in older adult services has increased between 31st March 2013 (52 headcount and 39.0wte) and 31st March 2014 (50 headcount and 40.2wte), it should be noted that there has been a reduction in the number of All Applied Psychologists (-6 headcount and -2.4wte). There remains the urgent need for an increase in availability of psychological services to older people across NHSScotland.
- This total of 852 (716.4wte) equates to 795 (667.9wte) Clinical Psychologists plus 57 (48.5wte) Other Applied Psychologists. This represents a national staffing level of 1 wte Applied Psychologist per 7,417 of the general population of Scotland.
- In addition to Clinical and Other Applied Psychologists, Psychology Services increasingly employ a skill-mix of staff.
- This skill-mix includes Graduates of the MSc in Psychological Therapies in Primary Care (60.1wte), Graduates of the MSc in the Applied Psychology of Children and Young People (32.1wte), cognitive behavioural therapists (40.5wte), counsellors (25.7wte), other therapists (13.8wte), and other clinical staff (18.4wte).
- As at 31st March 2014, an additional 57.3wte posts throughout NHSScotland Psychology Services were between being advertised and being filled with start dates commencing in April 2014. A further 6.5wte posts were approved for recruitment but not yet advertised.

Results and Commentary

Data in this report are NHSScotland Psychology Services Workforce information.

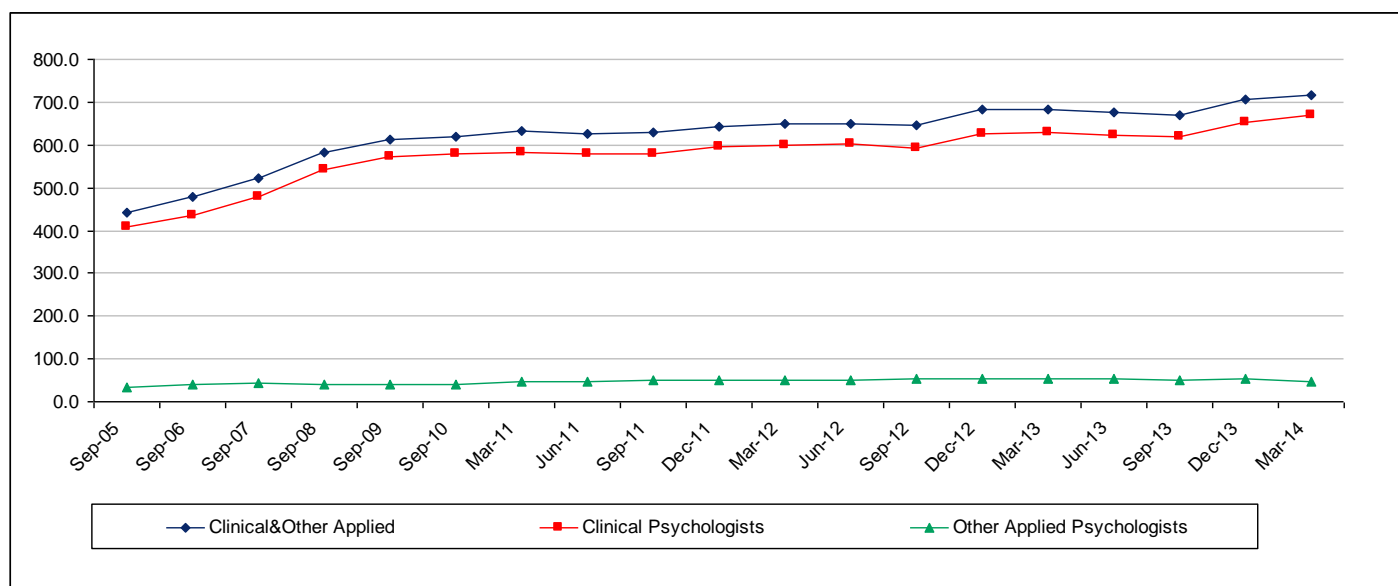
Source: NES-ISD National Psychology Services Workforce database.

Staff in Post

Overall trends

Figure 1 below shows the whole time equivalent number of Clinical and Other Applied Psychology staff from September 2005 to March 2014. The number (whole time equivalent) of Clinical and other Applied Psychologists has been rising steadily over this time period reflecting the successful expansion of the NES commissioned Doctorate in Clinical Psychology course and high retention rate of course graduates within NHSScotland Psychology Services.

Figure 1: wte of all Clinical & Other Applied Psychologists in NHSScotland, as at census dates 30th September 2005 – 31st March 2014.



Please note that the wte for clinical and other applied psychologists was 325.1 in Sep 2001, 359.3 in Sep 2002, 371.0 in Sep 2003 and 418.6 in Sep 2004.

Between 31st March 2013 and 31st March 2014, the following changes can be seen in the data:

- In total there were 852 (716.4wte) Clinical & Other Applied Psychologists employed in NHSScotland as at 31st March 2014. This is an increase of 5.4% headcount (+44hc), and an increase of 4.9% wte (+33.3wte) from 31st March 2013.
- This total of 852 (716.4wte) equates to 795 (667.5wte) Clinical Psychologists plus 57 (48.5wte) Other Applied Psychologists.

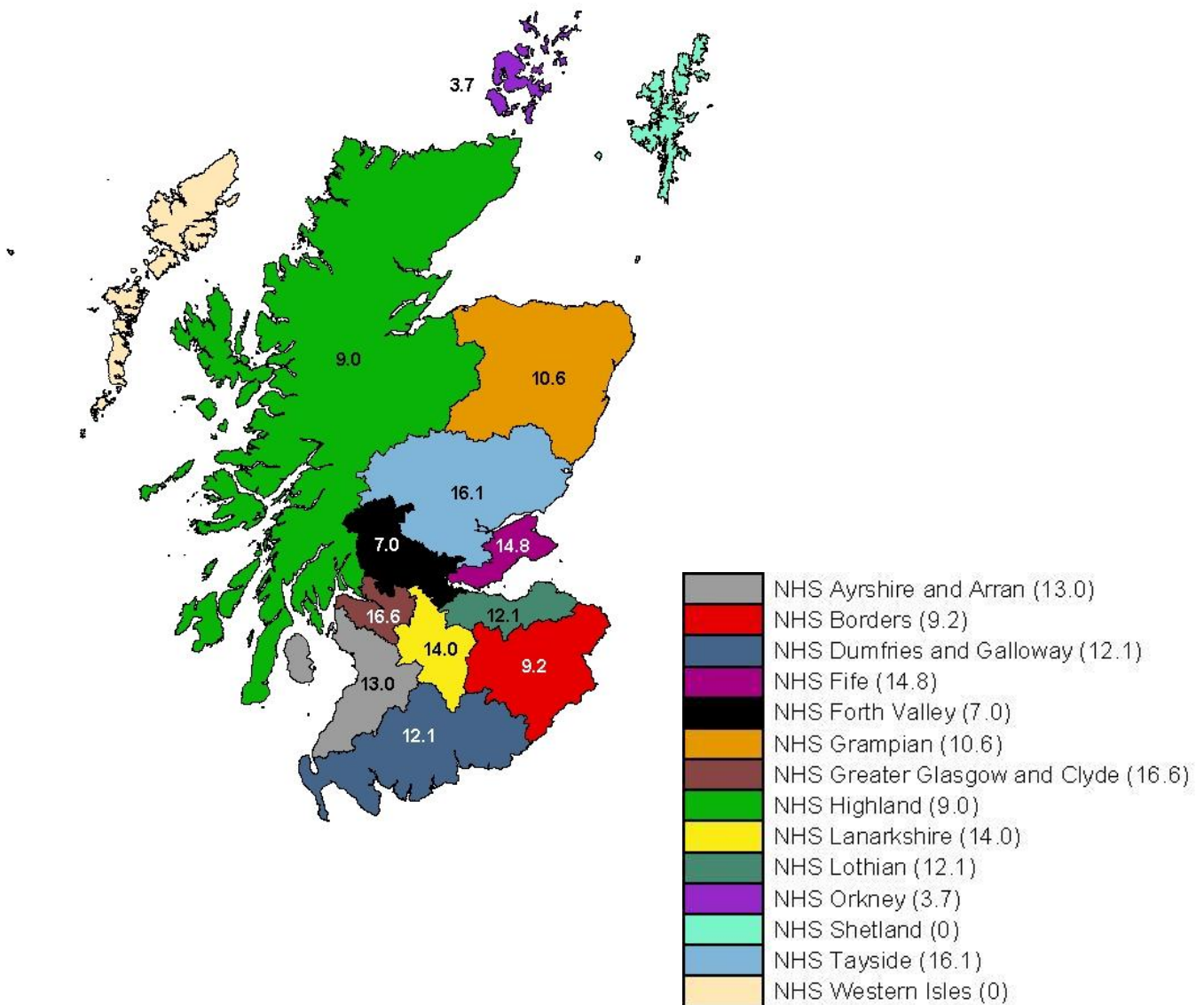
This represents a national staffing level for:

- 1 wte Clinical Psychologist per 7956 of the general population of Scotland, or 12.6wte Clinical Psychologist per 100,000 of the population.

- 1 wte Clinical and Other Applied Psychologist per 7417 of the population or 13.5wte Clinical and Other Applied Psychologist per 100,000 of the population.
- As at 31st March 2014, 67 posts (57.3wte) All Applied Psychologists were between being advertised and being filled, with the majority of staff due to be in post from April 2014.

The level of service provision varies significantly across NHSScotland as shown in Figure 2 below.

Figure 2: wte per 100,000 of the population for All Clinical & Other Applied Psychologists in NHSScotland as at 31st March 2014, by NHS Board.



Please note no Applied Psychologists are currently employed in Western Isles or Shetland; please refer to 'Services to the Island Boards' section for more information

- Mental Health is the principal area of work, employing 368.5wte Clinical and Other Applied Psychologists. This is an increase of 2.2% compared to the wte Mental Health figure as at 31st March 2013.
- The rest of the workforce is thinly distributed across services for people with learning disabilities, physical health, neuropsychology, forensic, alcohol & substance misuse and other specialty services. Please see tables 1 and 2 for details.
- Whilst the wte of All Professional Groups employed in older adult services has increased by 1.2wte this increase is specific to Other Clinical Staff as All Applied Psychologists have seen a reduction by 2.4wte.

Table 1: All Applied Psychologists (wte) employed in NHSScotland Psychology Services as at each census date, by Area of Work.

Area of Work	30 th Sept 2012	31 st Dec 2012	31 st Mar 2013	30 th June 2013	30 th Sept 2013	31 st Dec 2013	31 st Mar 2014	wte Difference from 31 st Mar 2013 to 31 st Mar 2014	% Difference from 31 st Mar 2013 to 31 st Mar 2014
Mental Health	337.2	361.9	360.7	352.2	349.1	369.0	368.5	7.8	2.2%
Learning Disabilities	63.7	67.0	68.8	66.7	67.1	66.0	64.8	-4.0	-5.8%
Physical Health	77.5	84.1	84.9	83.2	81.6	86.0	93.7	8.8	10.4%
Forensic	41.1	40.9	40.1	40.9	39.6	40.3	40.9	0.8	2.0%
Neuro-psychology	36.6	36.8	38.7	38.4	38.8	40.8	42.0	3.3	8.5%
Alcohol & Substance Misuse	21.9	23.5	23.8	24.8	24.1	28.6	27.6	3.8	16.0%
Other	67.0	68.4	66.1	69.7	70.1	75.6	78.9	12.7	19.2%
Total	645.0	682.5	683.1	676.0	670.3	706.3	716.4	33.3	4.9%

Please note that ongoing collaborative data quality exercises are being carried out with staff working in physical health, and with staff working in neuropsychology with the aim of ensuring more robust and accurate data are captured and reported. This enhancement in data quality may be reflected in the trends.

Table 2: All Applied Psychologists (wte) employed in NHSScotland Psychology Services as at each census date, by Target Age of Patients seen.

Target Age of Patients Seen	30th	31 st	31 st	30 th	30 th	31 st	31 st	wte	%
	Sept 2012	Dec 2012	Mar 2013	June 2013	Sept 2013	Dec 2013	Mar 2014	Difference from 31 st Mar 2013 to 31 st Mar 2014	Difference from 31 st Mar 2013 to 31 st Mar 2014
Children 0-19 yrs	168.5	186.7	185.3	183.3	184.2	200.9	198.4	13.1	7.1%
Adults 20-64 yrs	404.3	422.2	423.3	420.2	402.8	414.7	422.1	-1.2	-0.3%
Older People 65+ yrs	31.9	36.9	37.0	37.8	36.0	37.4	34.6	-2.4	-6.5%
Age Non specific	40.3	36.8	37.5	34.7	47.2	53.2	61.3	23.8	63.5%
Total	645.0	682.5	683.1	676.0	670.3	706.3	716.4	33.3	4.9%

Skill Mix

- Psychology services increasingly employ a skill-mix of staff as illustrated in the table below. Graduates of the MSc in Psychological Therapies in Primary Care (60.1wte), Graduates of the MSc in the Applied Psychology of Children and Young People (32.1wte), assistant psychologists (73.4wte), cognitive behavioural therapists (40.5wte), counsellors (25.7wte), other therapists (13.8wte), and other clinical staff (18.4wte), were employed in NHSScotland psychology services as at 31st March 2014.

Table 3: All Clinical & Other Applied Psychologists in NHSScotland as at 31st March 2014, by Professional Group.

Professional Group	Headcount	wte
All Applied Psychologists;	852	716.4
Clinical Psychologist	795	667.9
Counselling Psychologist	39	33.6
Health Psychologist	11	8.9
Forensic Psychologist	7	6.0
Neuropsychologist ¹	0	0.0
Other Clinical Staff;	307	263.9
Graduate of the MSc Psychological Therapy in Primary Care ²	69	60.1
Graduate of the MSc Applied Psychology for Children & Young People ²	36	32.1
CBT Therapist	45	40.5
Other Therapist	15	13.8
Counsellor	37	25.7
Psychology Assistant	77	73.4
Other ³	28	18.4
Total: All Professional Groups	1159	980.3

1. During 2014, those individuals previously recorded as Neuropsychologists (n= 4 headcount as at 31st December 2013) have been aligned with those professional groups regulated by the HCPC (Health and Care Professionals Council), and are thus now recorded as Clinical Psychologists (ie a headcount of n= 4 Neuropsychologists as at 31st December 2013 appear in the data as at 31st March 2014 as Clinical Psychologists). Those Clinical Psychologists, who in addition to their D Clin Psych qualification hold a Stage II BPS Neuropsychology qualification total a headcount of n=24 as at 31st March 2014. The breakdown by NHS Board is: Ayrshire&Arran n= 1; Dumfries&Galloway n=2; Fife n=2; Grampian n=4; Greater Glasgow&Clyde n=5; Highland n=1; Lothian n=7; State Hospital n=1; Tayside n=1.
2. For more employment detail of the Graduates of the MSc courses, please refer to the psychology workforce publication [2014-05-27-Psychology-Workforce-Tables](#) (Psychology Service in NHSScotland), tab 12 in the workbook.
3. Please note that nurses and allied health professionals are included within the 'Other' professional group within this table.

Table 4: All Clinical Staff (wte) employed in NHSScotland Psychology Services as at each census date, by Area of Work.

Area of Work	31st March 2013	31st March 2014	wte Difference from 31st March 2013 to 31st March 2014	% Difference from 31st March 2013 to 31st March 2014
Mental Health	531.0	554.1	23.1	4.4%
Learning Disabilities	87.7	84.7	-3.0	-3.4%
Physical Health	95.0	105.7	10.7	11.3%
Forensic	59.8	59.0	-0.8	-1.3%
Neuropsychology	42.9	47.3	4.4	10.3%
Alcohol and Substance Misuse	25.6	29.4	3.8	14.8%
Other	89.8	100.1	10.3	11.5%
Total	931.7	980.3	48.6	5.2%

Please note that ongoing collaborative data quality exercises are being carried out with staff working in physical health, and with staff working in neuropsychology with the aim of ensuring more robust and accurate data are captured and reported. This enhancement in data quality may be reflected in the trends.

Table 5: All Clinical Staff (wte) employed in NHSScotland Psychology Services as at each census date, by Target Age of Patients seen.

Target Age of Patients Seen	31 st March 2013	31 st March 2014	wte. Difference from 31 st March 2013 to 31 st March 2014	% Difference from 31 st March 2013 to 31 st March 2014
Children 0-19 years	252.3	266.1	13.8	5.5%
Adults 20-64 years	595.9	603.0	7.1	1.2%
Older People 65+ years	39.0	40.2	1.2	3.1%
Age Non specific	44.4	71.1	26.7	60.1
Total	931.7	980.3	48.6	5.2%

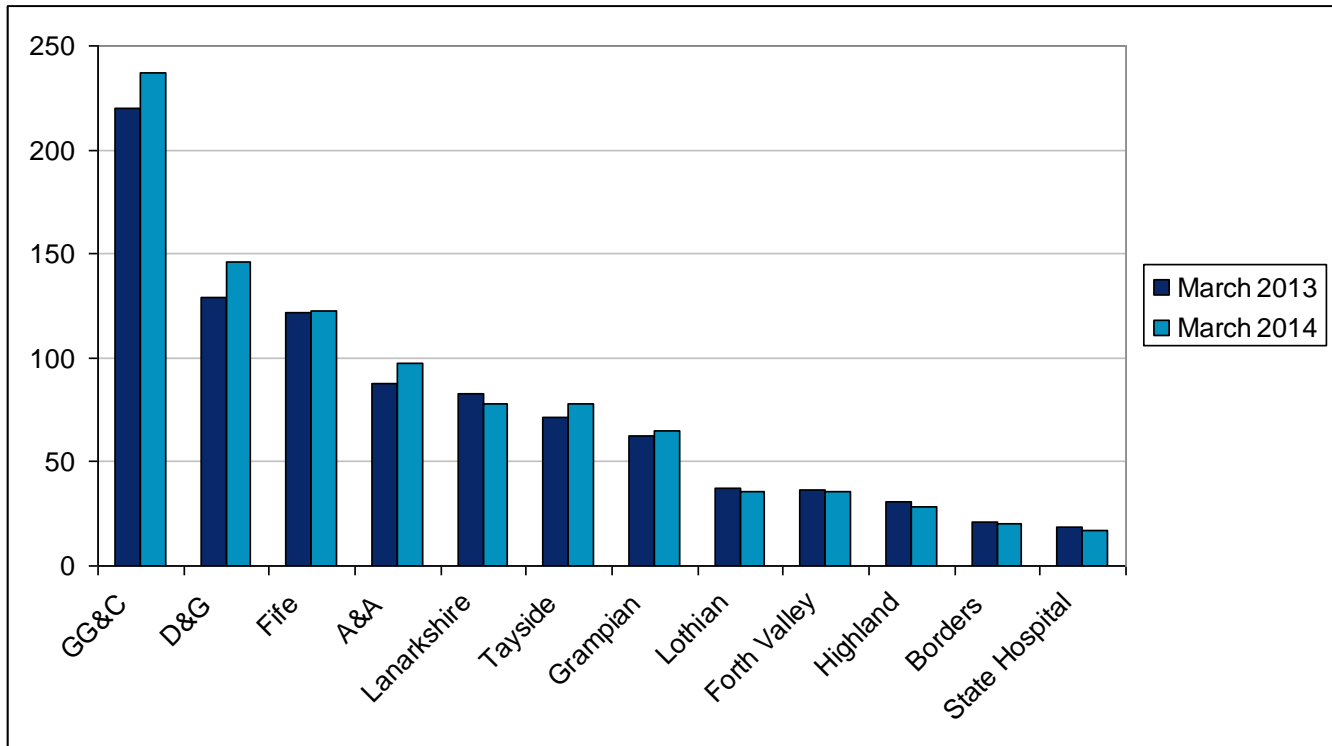
Please note the discrepancies in Area of Work and Professional Group totals are due to the conversion of hours worked to sessions.

Table 6: All Clinical Staff (wte) employed in NHSScotland Psychology Services as at each census date, by NHS Board.

NHS Board	31st March 2013	31st March 2014	wte. Difference from 31st March 2013 to 31st March 2014	% Difference from 31st March 2013 to 31st March 2014
Ayrshire & Arran	71.5	77.6	6.1	8.5%
Borders	18.7	17.4	-1.3	-7.0%
Dumfries & Galloway	37.1	36.0	-1.1	-3.0%
Fife	83.1	78.1	-5.0	-6.0%
Forth Valley	30.8	28.6	-2.2	-7.1%
Grampian	62.8	65.3	2.5	4.0%
Greater Glasgow & Clyde	220.2	236.7	16.5	7.5%
Highland	36.5	35.5	-1.0	-2.7%
Lanarkshire	121.8	122.7	0.9	0.7%
Lothian	128.9	146.2	17.3	13.4%
Orkney	0.8	0.8	0.0	0.0%
Shetland	0.7	0.7	0.0	0.0%
State Hospital	21.5	20.6	-0.9	-4.2%
Tayside	87.8	99.1	11.3	12.9%
Western Isles	0.2	0.2	0.0	0.0%
National Waiting Times Centre	1.0	1.0	0.0	0.0%
NHS Education for Scotland	8.3	13.8	5.5	66.3%
Total	931.7	980.3	48.6	5.2%

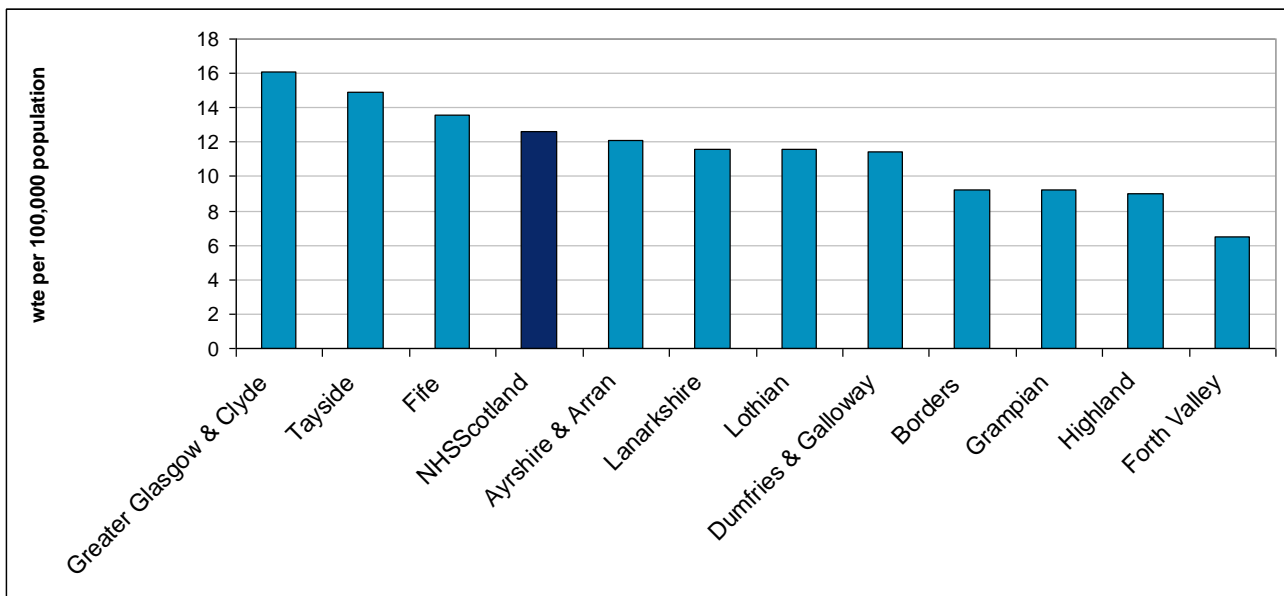
Increases in all clinical staff during this time period include recruitment of graduates from the Doctorate in Clinical Psychology, MSc Applied Psychology of Children & Young People and MSc Psychological Therapies in Primary Care.

Figure 3: wte all Clinical Staff by NHS board as at census dates 31st March 2013 and 31st March 2014.



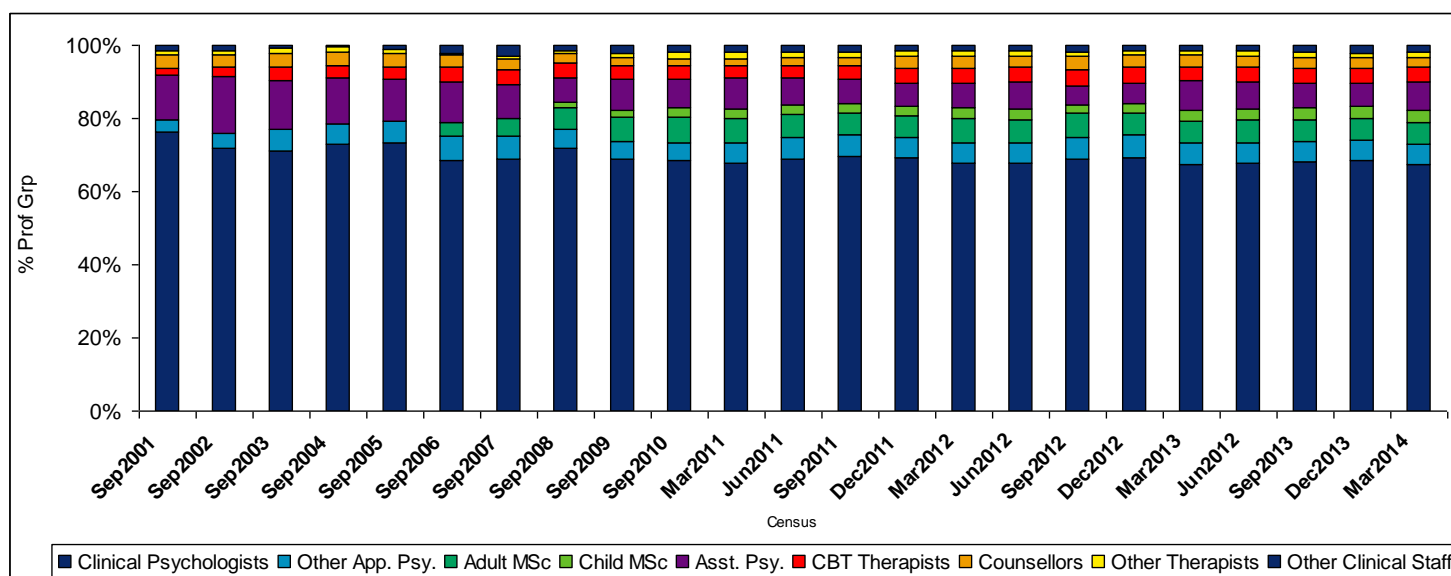
Please note that the following boards have been excluded due to small numbers: NES, National Waiting Times, NHS Orkney, NHS Western Isles, NHS Shetlands.

Figure 4: wte of All Clinical Staff per 100,000 population by NHS Board as at 31st March 2014.



Please note that the following boards have been excluded due to small numbers: NES, National Waiting Times, NHS Orkney, NHS Western Isles, NHS Shetlands.

Figure 5: Percentage staff by professional group as at census date (September 2001- March 2014).



Additional Information

Scottish Prison Service Transfer

As of the 1st November 2011, NHSScotland has responsibility for employing Healthcare staff within prisons. Previously, these people were employed directly by the Scottish Prison Service (SPS). This has resulted in a total of approximately 350 staff (headcount) transferring to NHSS. As at 31st March 2014 none of the staff involved were within NHSS Psychology Services.

Maternity Leave

As at 31st March 2014, 43.5wte (4.4%) of the 980.3wte total staff in post were on maternity leave. The majority of these posts are not backfilled.

NHS Highland

NHS Highland and The Highland Council are working towards developing an integrated model for health and social care. This new service model will involve an estimated 1,400 staff in adult community care services transferring from The Highland Council to NHS Highland. In addition, an estimated 230 NHS Highland staff in child health services will transfer to The Highland Council. It was anticipated that this new service model would have a direct impact on this release; however due to ongoing discussions locally within NHS Highland, the implementation date for this new model has been extended. The impact on any workforce statistics will be highlighted ahead of the corresponding release. As at 31st March 2014 none of the staff involved were within NHSS Psychology Services.

Statements Provided by Heads of Psychology Service

Statement provided by:	Statement on Psychology Workforce Figures as at 31st March 2014
NHS Ayrshire & Arran	The staff levels increased in 2014 following recruitment to five additional posts across the AMH Community, Community Paediatric and Older Adult/Physical Health/Neuropsychology Specialties/ Learning Disabilities. There has also been an unprecedented level of Maternity Leave during 2013-2014 (currently 13 posts across the Service) placing significant pressure on the Service to maintain and develop clinical service provision as well as continuing to lead on increasing access to psychological therapies through a programme of training and supervision. Two permanent posts have been approved to meet local needs related to Maternity Leave. Apparent reductions in 2 services are due to vacancies not yet filled.
NHS Borders	The apparent loss of Learning Disability staffing reflects the moving of the post to the LD service, thus it is no longer in the main psychology service. This highlights a potential problem with the current rules for data reporting rather than a loss of staff. Core establishment remains the same; we still have a temporary QUEST funded assistant psychologist. Maternity leave and high staff turnover continue to significantly impact on capacity and is a notable risk factor in relation to meeting Psychological therapies Target. We have recently recruited two fixed term staff, 1 wte CAAP and a .5 Clinical psychologist
NHS Dumfries & Galloway	Reduction in wte posts in Physical Health and Forensic Specialties result from temporary contracts for Assistant Psychologists and CBT therapist coming to an end. Neuropsychology wte reduction results from reclassification of post and links to increase in Mental Health wte. Service gaps now primarily relate to Clinical Health Psychology with uneven provision between medical specialties and very limited service to primary care. New post has been recruited to and in post since December planned for work in Acute Hospital with some specialism in Accident and Emergency and in Pain management
NHS Fife	The differences are due to 4 factors: A deduction of the 3 wte OHSAS staff who had historically been reported with Fife data. An LD maternity leave cover Assistant who inflated LD wte by 1.0 in 2013 & temporary decrease in LD wte due to an internal secondment. A reduction in the forensic staff due to a change in service delivery in Council service. Trial in Adult Mental Health of different service delivery model -increasing wte by employment of Assistants
NHS Forth Valley	There are continuing problems with Maternity leaves and vacant posts which are impacting our staffing. Vacancies will be filled, however maternity leaves are not covered.
NHS Grampian	The modest increase in overall wte is mainly attributable to securing temporary funding in a range of specialist areas (e.g. rheumatology, diabetes, public health and chronic pain) which it is hoped can eventually be confirmed as permanent posts. New funding had previously been confirmed to support the establishment of a number of posts in the new HMP & YOI Grampian which opened recently and

	recruitment to those positions is progressing. A welcome commitment has also been made to continue to fund a permanent 0.4wte Band 8B post in the Liaison Psychiatry service based at Aberdeen Royal Infirmary. Within both general Adult Mental Health and Older Adults services there has been a requirement to re-design a number of vacant posts to lower bands although this has facilitated recruitment of recently qualified staff to posts created. Over the past year CAMHS have also been affected by gaps in services due to maternity leave and vacancies with new appointments to the latter only available to take up post later in the year.
NHS Greater Glasgow & Clyde	There continues to be a focus on prioritising the recruitment to vacant psychology posts across the Board Area. Flexibility in recruiting and the nature of posts are strategic developments. Staff continue to be involved in clinical priorities; supervision of other therapists, teaching and training. An approach to covering areas that experience a reduced critical mass is currently being considered. This could improve our ability to meet the target and achieve our goal of sustainability.
NHS Highland	The small changes are in adult due to fixed term waiting list posts. A new full time older adult post has been filled. Child services continue to have considerable maternity leave issues. Argyll & Bute are looking to recruit into fixed term posts.
NHS Lanarkshire	Staffing within NHS Lanarkshire Psychological Services has remained largely unchanged over the past year. An overall increase of 0.7%wte between March 2013 and March 2014 is accounted for by two vacancies at the time of the census, a fixed-term increase in staffing within Addiction Psychology, and vacancies filled within Adult Psychological Services. The transfer of psychology services from Rutherglen/Cambuslang (GG&C, approx. 60,000 population) to NHSD Lanarkshire has been delayed until 1 st October 2014. Psychology services in the "Northern Corridor" area (GG&C, approx.. 20,000 population) will technically transfer, but will continue to be provided by GG&C for the time being, under an SLA.
NHS Lothian	The four Heads of Psychology Services are in the process of reviewing service provision to improve the effectiveness of delivery across NHS Lothian.
NHS Tayside	The uplift in posts is due to new monies being made available for Neuropsychology, Health Psychology and Forensic Psychology plus the appointment to vacant posts in other specialties.
NHS State Hospital	The discrepancies shown are due to delays in filling posts.
NHS Education for Scotland	NHS Education for Scotland directly employs 13.8wte clinical staff included in the psychology workforce figures. There are also 8.6wte staff on secondment from NHSScotland boards, mostly on short-term contracts in supporting research roles; these staff are not included in the overall figures.
HOOPS (Heads of Older People's Psychology)	The recent report to Government from the Psychological Therapies Older People's Working Group ' <i>The Challenge of Delivering Psychological Therapies to Older People in Scotland</i> ' outlined the urgent need for an increase in availability of psychological services

Services)	to older people at both high and low intensity levels, as well as the need to develop services in physical health settings. The recommendations of the report were taken forward in commitments 20 and 21 of the Mental Health Strategy. The Heads of Older People's services very much welcome any increase in WTE across Scotland. It should be noted however that there is no consistent improvement across the country and that some services have actually seen a reduction in WTE staffing over this period
-----------	---

Vacancy Information

As at 31st March 2014 vacant posts within NHSScotland Psychology Services were:

- 57.3wte posts were between being advertised and being filled, with start dates commencing in April 2014.
- 6.5wte posts were approved for recruitment, but not yet advertised.

In practice many vacancies may arise as a result of the internal movement of staff within a service. This may result in there being no immediate net gain to the workforce in terms of numbers.

Table 7: wte of vacancy posts within NHSScotland psychology services which at the 31st March 2014 were between being advertised and being filled.

Job Title	Scotland wte
All Applied Psychologists;	46.6
Clinical Psychologist	44.6
Health Psychologist	2.0
Other Clinical Staff;	10.7
Clinical Associate in Applied Psychology	1.0
Child and Adolescent Therapist	3.7
Counsellor	0.6
Psychology Assistant	5.4
Total	57.3

Services to the Islands Boards as at 31st March 2014

NHS Board	Description of Staff in post and services received from mainland NHS Boards.
NHS Orkney	<p>Employs a 0.8wte counselling psychologist as part of the community mental health team, offering a psychology service for individuals aged 18 and upwards.</p> <p>NHS Grampian Clinical Psychology staff have contractual obligations to Orkney in the following areas; 1/Adult Neuropsychology in Orkney - a clinical neuropsychologist can visit on a needs basis when travel to Aberdeen is difficult for clients however all other clients are seen in Aberdeen, 2/Adult Eating Disorders in Orkney - Currently a vacancy in Eating Disorders, therefore a 0.5wte psychologist provides approximately 1-2 appointments per month, 3/CAMHS Psychology - NHS Grampian are contracted to provide 3 days psychology service 4 times per year to Orkney. 4/Adult Learning Disabilities in Orkney - Currently there is no SLA in place to provide a service to Orkney.</p>
NHS Shetland	<p>NHS Shetland obtains CAMHS psychology input from a self-employed clinical psychologist.</p> <p>Grampian Health Board Clinical Psychology staff have contractual obligations Shetland in the following areas; 1/Adult Neuropsychology in Shetland - a clinical neuropsychologist can visit on a needs basis when travel to Aberdeen is difficult for clients however all other clients are seen in Aberdeen, 2/Adult Eating Disorders in Shetland - Currently a vacancy in Eating Disorders, therefore a 0.5wte psychologist provides approximately 1-2 appointments per month, 3/Adult Learning Disabilities in Shetland - 2 days every 4 months; 1 staff member.</p>
NHS Western Isles	<p>There is an agreement between NHS GG&C and the Western Isles of 0.1wte clinical psychologists in CAMHS.</p> <p>There is also a telemedicine clinic from the Southern general Hospital to the Western Isles.</p>

Staff in training as at 31st March 2014.

NHS Education for Scotland (NES) has responsibility for the pre-registration training of Clinical Psychologists for NHSScotland i.e. the main source of psychology workforce supply. The impact of the expansion and modernisation of Clinical Psychology training is accruing as successive cohorts join the workforce. The current numbers in training are shown in Table 8 below.

NES also has responsibility for commissioning two masters level training courses aimed at enhancing the skill mix; MSc Psychological Therapy in Primary Care and MSc Applied Psychology in Children&Young People.

Table 8: Number (headcount) in training in Applied Psychology in NHSScotland as at 31st March 2014.

Training Course	Headcount
Doctorate in Clinical Psychology ¹	199
MSc Psychological Therapy in Primary Care	22
MSc Applied Psychology of Children & Young People	17
BPS Stage 2 Qualification in Health Psychology	9
Total Number in Training	247

1. In order to meet strategic objectives, training is aligned to strategic priorities. Of this total of 199, as at 31st March 2014, 24 were Forensic aligned posts, 23 were aligned to Older People's services and 34 were CAMHS aligned posts, funded by the Scottish Government.

Glossary

A4C	Agenda for Change
CAMHS	Child & Adolescent Mental Health Services
HOOPS	Heads of Older People's Psychology Services
HOPS	Heads of Psychology Services
ISD	Information Services Division
NES	NHS Education for Scotland
NHSS	NHSScotland
PRA	Pre-Release Access
PTT	Psychological Therapies Team
wte	Whole Time Equivalent; Adjusts staff headcount to take account of part time staff.

List of Tables

Table No.	Name	Time period	File & size
1	<u>Clinical Staff Employed in Psychology Services in NHSScotland by Professional Group.</u>	31st March 2014	Excel [4 MB]
1b	<u>Trend Table showing Clinical Staff Employed in NHSScotland Psychology Services by Professional Group and Year (wte).</u>	31st March 2014	Excel [4 MB]
1c	<u>Clinical and Other Applied Psychologists (wte) employed in Psychology Services in NHSScotland as at census date specified.</u>	31st March 2014	Excel [4 MB]
1d	<u>Trend table showing Clinical Staff Employed in NHSScotland Psychology Services by Professional Group and Year (wte).</u>	31st March 2014	Excel [4 MB]
2	<u>Age profile of Psychology Staff employed in NHSScotland by Professional Group.</u>	31st March 2014	Excel [4 MB]
3a	<u>Ratio of per capita population to 1 wte of All Applied Psychologists in NHSScotland by NHS Board.</u>	31st March 2014	Excel [4 MB]
3b	<u>Ratio of per capita population to 1 wte of All Clinical Staff in NHSScotland by NHS Board.</u>	31st March 2014	Excel [4 MB]
4	<u>All Clinical Staff Employed in NHSScotland Psychology Services, by area of work, target age of patients seen and Professional Group.</u>	31st March 2014	Excel [4 MB]
4b	<u>Trend table showing all Clinical Staff Employed in NHSScotland Psychology Services, by area of work, target age of patients seen and Professional Group.</u>	31st March 2014	Excel [4 MB]
5	<u>Clinical Staff Employed in Psychology Services in NHSScotland by Professional Group, Contract Type & Gender.</u>	31st March 2014	Excel [4 MB]
6	<u>Clinical Staff Employed in Psychology Services in NHSScotland, by Professional Group & Agenda for Change Band.</u>	31st March 2014	Excel [4 MB]
7	<u>Clinical Staff Employed in Psychology Services in NHSScotland, by Professional Group, Term of Contract & Gender.</u>	31st March 2014	Excel [4 MB]
8	<u>Clinical Staff Employed in NHSScotland Psychology Services by Professional Group & NHS Region & Board.</u>	31st March 2014	Excel [4 MB]
9	<u>Number of vacancy posts within NHSScotland Psychology Services which were between being advertised and being filled.</u>	31st March 2014	Excel [4 MB]

10	<u>Headcount and wte of All Clinical staff employed in NHSScotland psy services as 30th September 2013, by Declared Ethnic Group.</u>	31st March 2014	Excel [4 MB]
11	<u>Headcount and wte of All Clinical staff employed in NHSScotland psy services as 30th September 2013, by Declared Disability.</u>	31st March 2014	Excel [4 MB]
Services to the Boards	<u>Description of Staff in post and services received from mainland NHS Boards.</u>	31st March 2014	Excel [4 MB]
12a	<u>All graduates of the MSc in Applied Psychology for Children & Young People (2007-2011) by Employment as at 30th September 2013.</u>	31st March 2014	Excel [4 MB]
12b	<u>All graduates of the MSc Psychological Therapy in Primary Care (2005-2011) by Employment as at 30th September 2013.</u>	31st March 2014	Excel [4 MB]
13	<u>Headcount in training in Applied Psychology in NHSScotland as at 30th September 2013.</u>	31st March 2014	Excel [4 MB]
14a	<u>Headcount of D Clin Psych Graduates employed in NHSScotland Psychology Services.</u>	31st March 2014	Excel [4 MB]
14b	<u>Percentage of D Clin Psych Graduates employed in NHSScotland Psychology Services.</u>	31st March 2014	Excel [4 MB]

Note: in order to view these documents, your macro security settings will need to be set to medium. To change macro security settings using Tools, Macro, Security - set security level to Medium and re-open the report.

Contact

Liz Jamieson

Principal Information Analyst

lizjamieson@nhs.net

0131 275 6422

Heather Graveson

Information Analyst

heather.graveson@nhs.net

0131 275 7626

Claire Howitt

Information Analyst

claire.howitt@nhs.net

0131 275 6203

Further Information

Further information can be found on the [ISD website](#)

Rate this publication

Please [provide feedback](#) on this publication to help us improve our services.

Appendix

A1 – Background Information

Within NHSScotland, recent years have seen an unparalleled demand for increased access to Applied Psychologists and Psychological Therapies.

Contemporary Healthcare Policy recognises the importance of Psychological and Psychosocial factors for physical and mental health and well being across the life span. Government objectives for health improvement require change in what people (i.e. the public, service users and service providers), individually and collectively, think, feel and do about health and healthcare in Scotland.

NHS Education for Scotland has two major areas of responsibility for psychology in NHSScotland:

- Training of psychologists for NHSScotland.
- Upskilling the existing multi-professional workforce in psychological care.

Training of Psychologists for NHSScotland: responsibility for the pre-registration training of Clinical Psychologists for NHSScotland i.e. the main source of psychology services workforce supply. The impact of expansion and modernisation of psychology training is accruing as successive cohorts of those who have completed the Doctorate in Clinical Psychology, and the new Masters programmes in Psychological Therapy in Primary Care, and in Applied Psychology of Children&Young People enter the workforce.

A summary of the training programmes is shown on page 22.

Educational Level	Training	Competences
Doctoral	Clinical Psychology	Breadth and depth of psychological knowledge and skill. Multiple theoretical models across lifespan in mental and physical health, disability and systemic domains, consultancy, training supervision and independent research.
Masters	<p>Psychological Therapy in Primary Care (MSc PTPC)</p> <p>Applied Psychology for Children and Young People (MSc APCYP)</p>	<p>Specific theoretical model(s) for specific client group with pre-defined range and severity of problems. Supervised research.</p> <p>MSc Psychological Therapy in Primary Care: Cognitive Behavioural approaches for moderate anxiety and depression in primary care.</p> <p>MSc Applied Psychology of Children and Young People: Early intervention approaches for children and young people and families with moderate emotional and behavioural concerns.</p>

Mental Health Policy and Targets

Developments in mental health care have been driven by a series of reports and policy recommendations:

The Mental Health Strategy: 2012-2015 (2012) sets the policy direction for the next four years and includes a commitment to enhancing the delivery of psychological therapies in NHSScotland in NHSScotland. <http://www.scotland.gov.uk/Resource/Doc/357051/0120639.pdf>

A HEAT target was set in April 2011 to provide faster access to mental health services by delivering 18 weeks referral to treatment for Psychological Therapies from December 2014.

The Psychological Therapies 'Matrix' is a guide to planning and delivering evidence-based Psychological Therapies within NHS Boards in Scotland. It provides a summary of the information on the current evidence base for various therapeutic approaches, a template to aid in the identification of key gaps in service, and advice on important governance issues. <http://www.nes.scot.nhs.uk/education-and-training/by-discipline/psychology/matrix/the-psychological-therapies-matrix.aspx>

Further information on Older People's psychology services can be found in the paper: 'The Challenge of Delivering Psychological Therapies for Older People in Scotland' (2011), a report of Older People's Psychological Therapies Working Group <http://www.scotland.gov.uk/Resource/0039/00392673.pdf>

For more details on psychology forensic services, please refer to the following paper: 'Psychological Care in the Context of Forensic Mental Health Services: New Responsibilities for Health Boards in Scotland (2011), Report by Heads of Psychological Services in NHSScotland.

For more information on psychology services in NHSScotland please see the 'Applied Psychologists and Psychology in NHSScotland: Working Group Discussion Paper' available at: http://www.sehd.scot.nhs.uk/mels/CEL2011_10.pdf

Links to Related Publications

There is a differing age range of service provision across the boards in child services, for more details of this please refer to CAMHS publication, available at the following link: <http://www.isdscotland.org/Health-Topics/Workforce/CAMHS/>

Data on Psychological Therapies waiting times in NHSScotland are available at: <http://www.isdscotland.org/Health-Topics/Waiting-Times/Publications/2014-05-27/2014-05-27-WT-PsychTherapies-Report.pdf>

Further information on Mental Health services in NHSScotland can be found on the website: <http://www.isdscotland.org/Health-Topics/Mental-Health/>

For further information on training programmes within applied psychology in NHSScotland please see:

<http://www.nes.scot.nhs.uk/education-and-training/by-discipline/psychology.aspx>

A2 – Publication Metadata (including revisions details)

Metadata Indicator	Description
Publication title	Workforce Planning for Psychology Services in NHSScotland: Characteristics of the Workforce Supply as at 31st March 2014.
Description	Describes the characteristics of clinical staff employed in NHSScotland Psychology Services as at 31st March 2014.
Theme	Health & Social Care
Topic	Health Care Personnel, Finance and Performance
Format	Excel Format
Data source(s)	CPS Workforce Database
Date that data are acquired	Approximately 2 weeks after the census date
Release date	27 th May 2014
Frequency	From 2001-2010 publications were annual, data as at 30th September, from March 2011 the publications have been quarterly.
Timeframe of data and timeliness	Data up to 31st March 2014, normal timeliness for this publication, no delay occurred. Reports data since 2001.
Continuity of data	In December 2009 information was published by the new Agenda for Change (AfC) classifications for the first time. Historically, NHSScotland workforce information had been published in a format based on the pay structure, namely Whitley for the majority of staff.
Revisions statement	N/A
Revisions relevant to this publication	N/A
Concepts and definitions	please see executive summary section of the report
Relevance and key uses of the statistics	See link to known uses of the Psychology Data: Known Uses of the Psychology Data Previous years have seen an increase in staffing; these figures have attracted considerable media attention in the past due to modernisation of Clinical Psychology training agenda in NHSScotland.
Accuracy	100% sign off received from Heads of Psychology Services and Heads of Specialties
Completeness	100% of data returned, all used for analysis
Comparability	Psychologists can be compared to psychologists providing services to an age group of child and/or adolescent in the CAMHS Workforce Planning Project http://www.isdscotland.org/Health%2DTopics/Workforce/CAMHS/

Accessibility	It is the policy of ISD Scotland to make its web sites and products accessible according to published guidelines .
Coherence and clarity	All Psychology tables are accessible via the ISD website in a pdf or excel format at http://www.isdscotland.org/Health%2DTopics/Workforce/Psychology/ Data are presented by: Professional group; NHS Board; Area of work; Target Age and A4C band. Trainee Data is not included in the main workforce tables.
Value type and unit of measurement	Headcount and whole time equivalent (wte). Numeric
Disclosure	The ISD protocol on Statistical Disclosure Protocol is followed.
Official Statistics designation	National Statistics
UK Statistics Authority Assessment	Assessed by UK Statistics Authority assessment-report-39---statistics-on-nhs-scotland-workforce.pdf
Last published	25 th February 2014.
Next published	26 th August 2014.
Date of first publication	2001
Help email	nss.isdwfdinfo@nhs.net
Date form completed	

A3 – Early Access details (including Pre-Release Access)

Pre-Release Access

Under terms of the "Pre-Release Access to Official Statistics (Scotland) Order 2008", ISD are obliged to publish information on those receiving Pre-Release Access ("Pre-Release Access" refers to statistics in their final form prior to publication). The standard maximum Pre-Release Access is five working days. Shown below are details of those receiving standard Pre-Release Access and, separately, those receiving extended Pre-Release Access.

Standard Pre-Release Access:

Scottish Government Health Department
NHS Board Chief Executives
NHS Board Communication leads

Extended Pre-Release Access

Extended Pre-Release Access of 8 working days is given to a small number of named individuals in the Scottish Government Health Department (Analytical Services Division). This Pre-Release Access is for the sole purpose of enabling that department to gain an understanding of the statistics prior to briefing others in Scottish Government (during the period of standard Pre-Release Access).

Scottish Government Health Department (Analytical Services Division)

Early Access for Quality Assurance

These statistics will also have been made available to those who needed access to help quality assure the publication:

Head of NES Psychology Directorate

Workforce Steering Groups

Lead Clinicians Groups

A4 – ISD and Official Statistics

About ISD

Scotland has some of the best health service data in the world combining high quality, consistency, national coverage and the ability to link data to allow patient based analysis and follow up.

Information Services Division (ISD) is a business operating unit of NHS National Services Scotland and has been in existence for over 40 years. We are an essential support service to NHSScotland and the Scottish Government and others, responsive to the needs of NHSScotland as the delivery of health and social care evolves.

Purpose: To deliver effective national and specialist intelligence services to improve the health and wellbeing of people in Scotland.

Mission: Better Information, Better Decisions, Better Health

Vision: To be a valued partner in improving health and wellbeing in Scotland by providing a world class intelligence service.

Official Statistics

Information Services Division (ISD) is the principal and authoritative source of statistics on health and care services in Scotland. ISD is designated by legislation as a producer of 'Official Statistics'. Our official statistics publications are produced to a high professional standard and comply with the Code of Practice for Official Statistics. The Code of Practice is produced and monitored by the UK Statistics Authority which is independent of Government. Under the Code of Practice, the format, content and timing of statistics publications are the responsibility of professional staff working within ISD.

ISD's statistical publications are currently classified as one of the following:

- National Statistics (i.e. assessed by the UK Statistics Authority as complying with the Code of Practice)
- National Statistics (i.e. legacy, still to be assessed by the UK Statistics Authority)
- Official Statistics (i.e. still to be assessed by the UK Statistics Authority)
- other (not Official Statistics)

Further information on ISD's statistics, including compliance with the Code of Practice for Official Statistics, and on the UK Statistics Authority, is available on the [ISD website](#).

The United Kingdom Statistics Authority has designated these statistics as National Statistics, in accordance with the Statistics and Registration Service Act 2007 and signifying compliance with the Code of Practice for Official Statistics. Designation can be broadly interpreted to mean that the statistics:

- meet identified user needs;
- are well explained and readily accessible;
- are produced according to sound methods, and
- are managed impartially and objectively in the public interest.

Once statistics have been designated as National Statistics it is a statutory requirement that the Code of Practice shall continue to be observed.